

With the hope of helping other Lawson clients, The City of High Point put together the following documentation related to the installation of the Requisition Center (RQC) module. This document provides more detailed explanation of the steps required. The following screenshots and commentary reflect the steps outlined in the Lawson Requisition Center Installation Guide version 9.0.1 published May 2011.

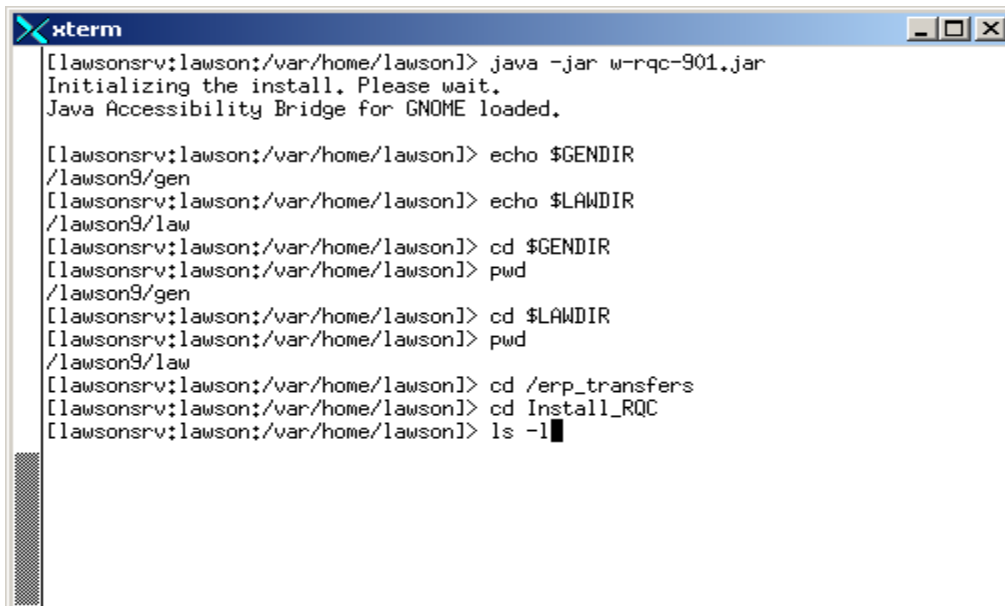
Please note that this implementation was done on a Sun Solaris UNIX Machine running Oracle 11 using WebSphere 7.0.

This document illustrates the steps we followed to complete an error free roll out of this application. **However, note that we are providing this document for convenience/reference only and do not make any guarantees that it is free of errors nor do we provide any warranties expressed or implied.**

Page numbers (i.e. Page 8: ) refer to page numbers in the Lawson Requisition Center Installation Guide.

### Page 8: Installing Lawson Requisition Center

- Establish permissions: screenshots not made
- Extract the Installation File: screenshots not taken



```
[[lawsonsrv:lawson:/var/home/lawson]> java -jar w-rqc-901.jar
Initializing the install. Please wait.
Java Accessibility Bridge for GNOME loaded.

[[lawsonsrv:lawson:/var/home/lawson]> echo $GENDIR
/var/home/lawson9/gen
[[lawsonsrv:lawson:/var/home/lawson]> echo $LAWDIR
/var/home/lawson9/law
[[lawsonsrv:lawson:/var/home/lawson]> cd $GENDIR
[[lawsonsrv:lawson:/var/home/lawson]> pwd
/var/home/lawson9/gen
[[lawsonsrv:lawson:/var/home/lawson]> cd $LAWDIR
[[lawsonsrv:lawson:/var/home/lawson]> pwd
/var/home/lawson9/law
[[lawsonsrv:lawson:/var/home/lawson]> cd /erp_transfers
[[lawsonsrv:lawson:/var/home/lawson]> cd Install_RQC
[[lawsonsrv:lawson:/var/home/lawson]> ls -l
```

cd /erp\_transfers/Install\_RQC

```

xterm
[lawsonsrv:lawson:/var/home/lawson]> pwd
/erp_transfers/Install_RQC
[lawsonsrv:lawson:/var/home/lawson]> ls -l
total 37694
drwxrwxrwx  2 nobody  nobody    512 May  4 08:01 META-INF/
-rw-rw-rw-  1 nobody  nobody   3625 Jun  3 12:16 rqc-901.install.2011060312
1337.log
-rw-rw-rw-  1 nobody  nobody    803 Aug  3 17:50 rqc-901.install.2011080317
4736.log
-rw-rw-rw-  1 nobody  nobody    803 Aug  3 17:52 rqc-901.install.2011080317
5145.log
-rw-r--r--  1 nobody  nobody  9632245 Jun  3 12:10 w-0900010000-RQC.zip
-rw-rw-rw-  1 nobody  nobody  9634161 May  4 08:01 w-rqc-901.jar
[lawsonsrv:lawson:/var/home/lawson]> █

```

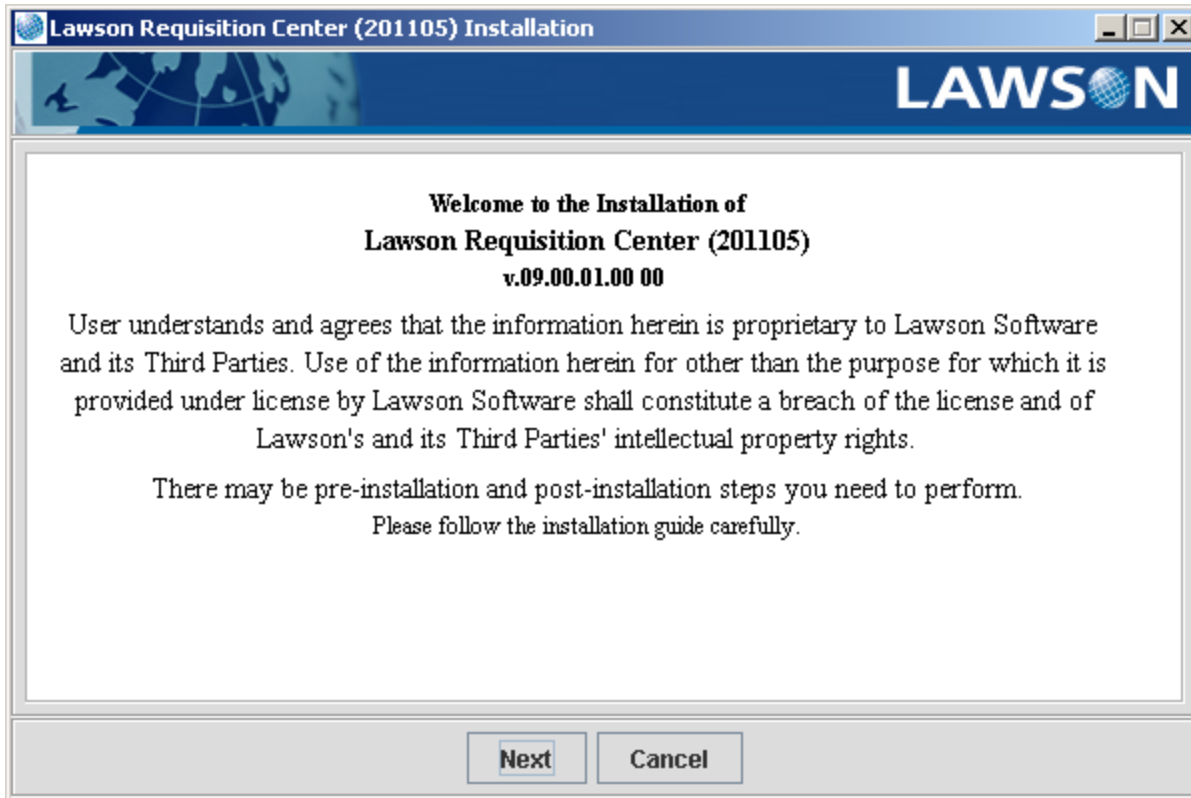
The 2 screenshots above show the install directory and its contents.

```

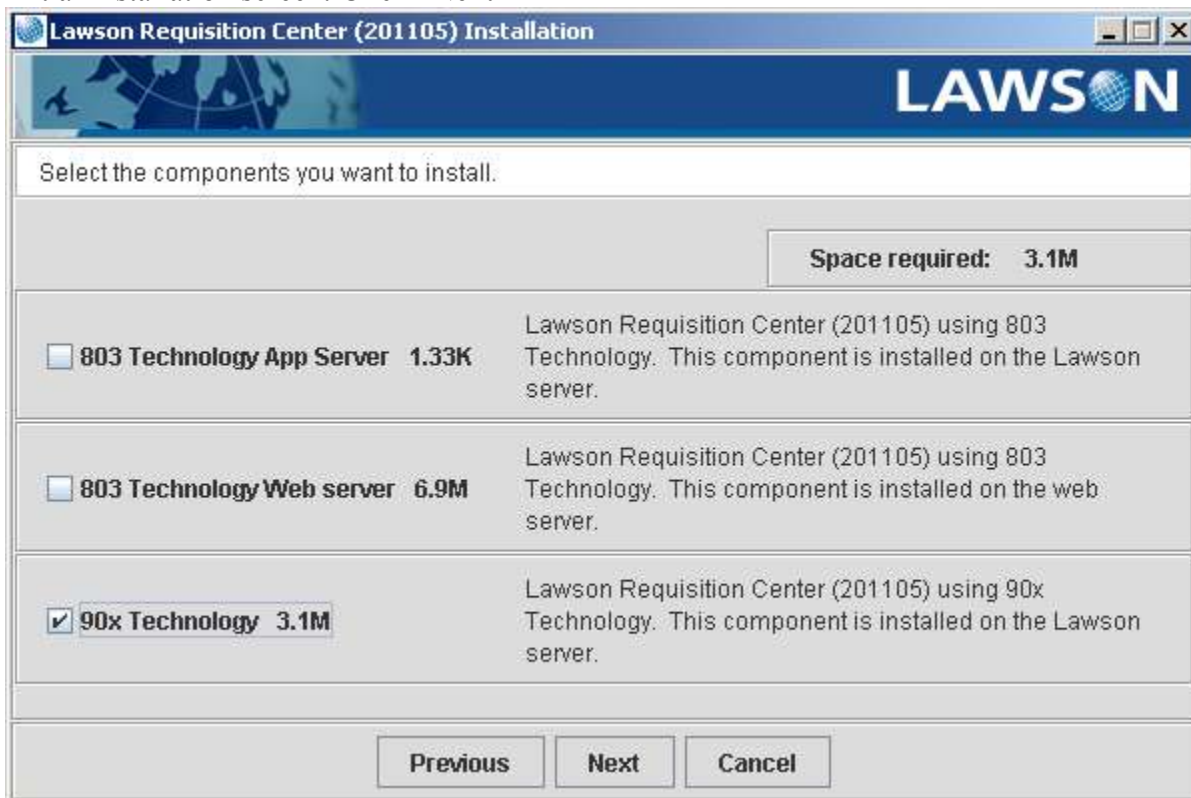
xterm
[lawsonsrv:lawson:/var/home/lawson]> pwd
/erp_transfers/Install_RQC
[lawsonsrv:lawson:/var/home/lawson]> ls -l
total 37694
drwxrwxrwx  2 nobody  nobody    512 May  4 08:01 META-INF/
-rw-rw-rw-  1 nobody  nobody   3625 Jun  3 12:16 rqc-901.install.2011060312
1337.log
-rw-rw-rw-  1 nobody  nobody    803 Aug  3 17:50 rqc-901.install.2011080317
4736.log
-rw-rw-rw-  1 nobody  nobody    803 Aug  3 17:52 rqc-901.install.2011080317
5145.log
-rw-r--r--  1 nobody  nobody  9632245 Jun  3 12:10 w-0900010000-RQC.zip
-rw-rw-rw-  1 nobody  nobody  9634161 May  4 08:01 w-rqc-901.jar
[lawsonsrv:lawson:/var/home/lawson]> java -jar w-rqc-901.jar
Initializing the install. Please wait.
Java Accessibility Bridge for GNOME loaded.
█

```

**Page 9: Launch the installation file:** java -jar w-rqc-901.jar



Initial Installation screen: Click "Next"

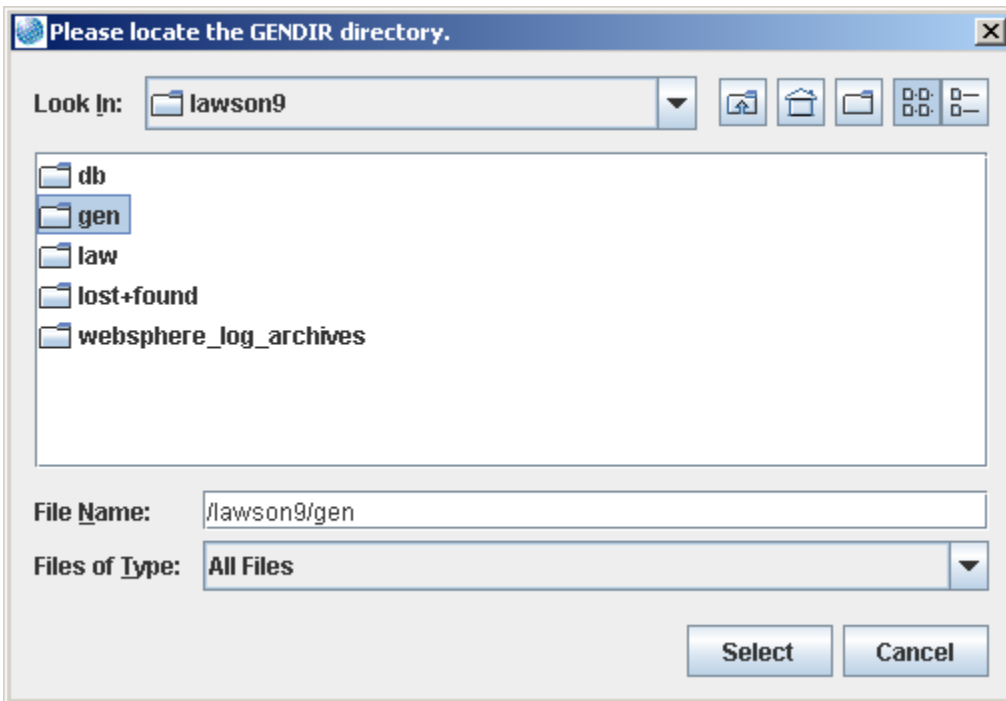


**Chose the Component(s) to install:** Selected 90x Technology then clicked Next.

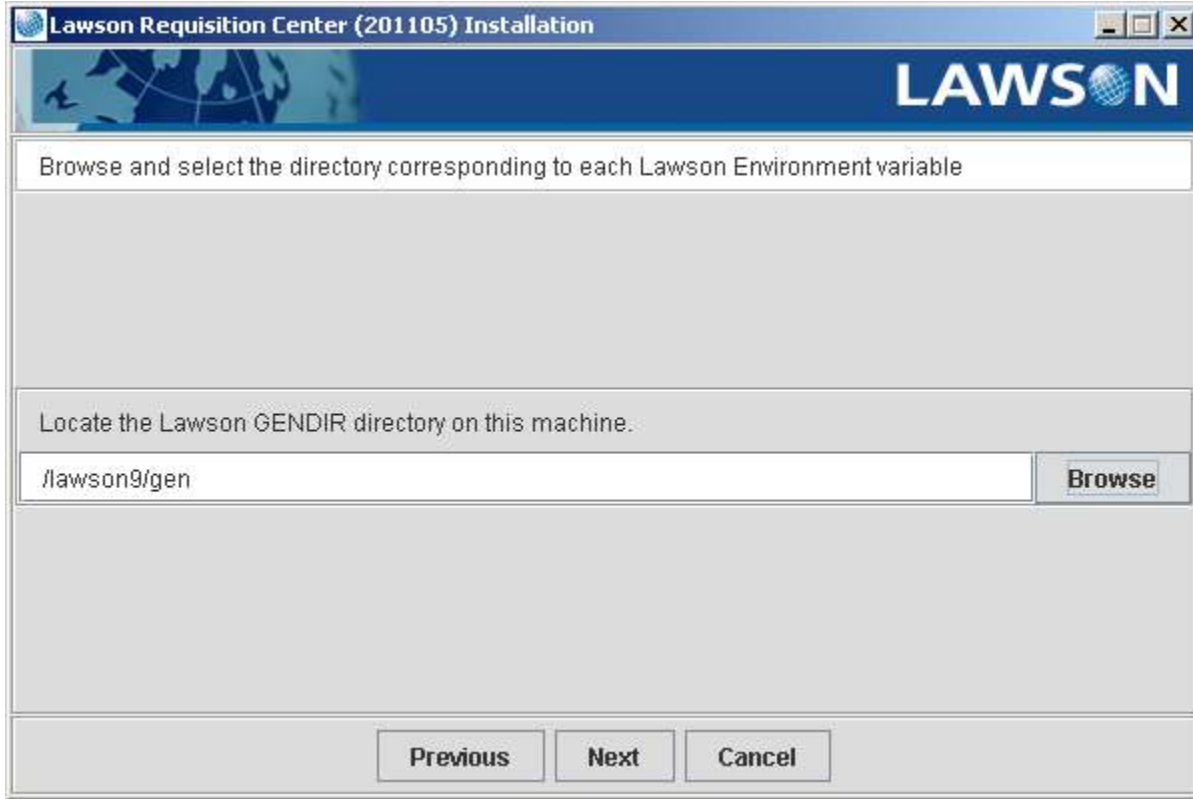


**Specify Required Installation Values:**

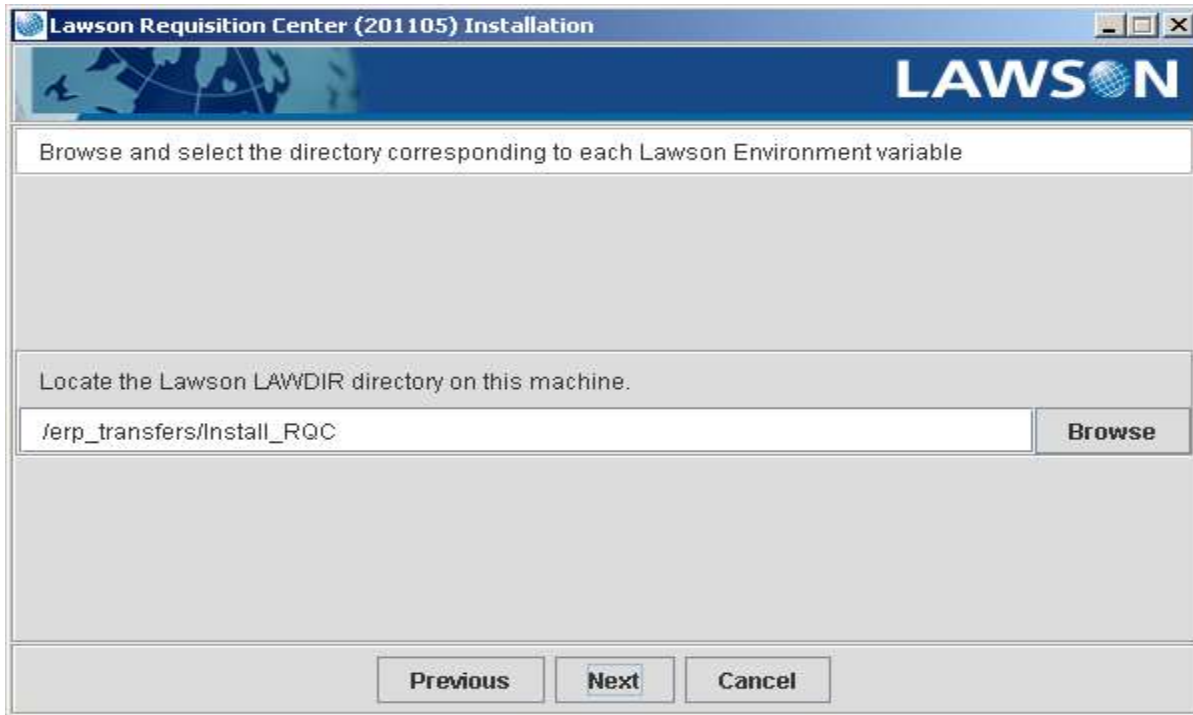
Click “Browse” to locate the GENDIR directory (I did not take a screenshot of this prior to browsing to the correct location. The default path is the install directory as will be seen for the LAWDIR directory).



Browsed to /lawson9 , highlighted gen for GENDIR then pressed Select.



After Select on previous screen. Press Next.



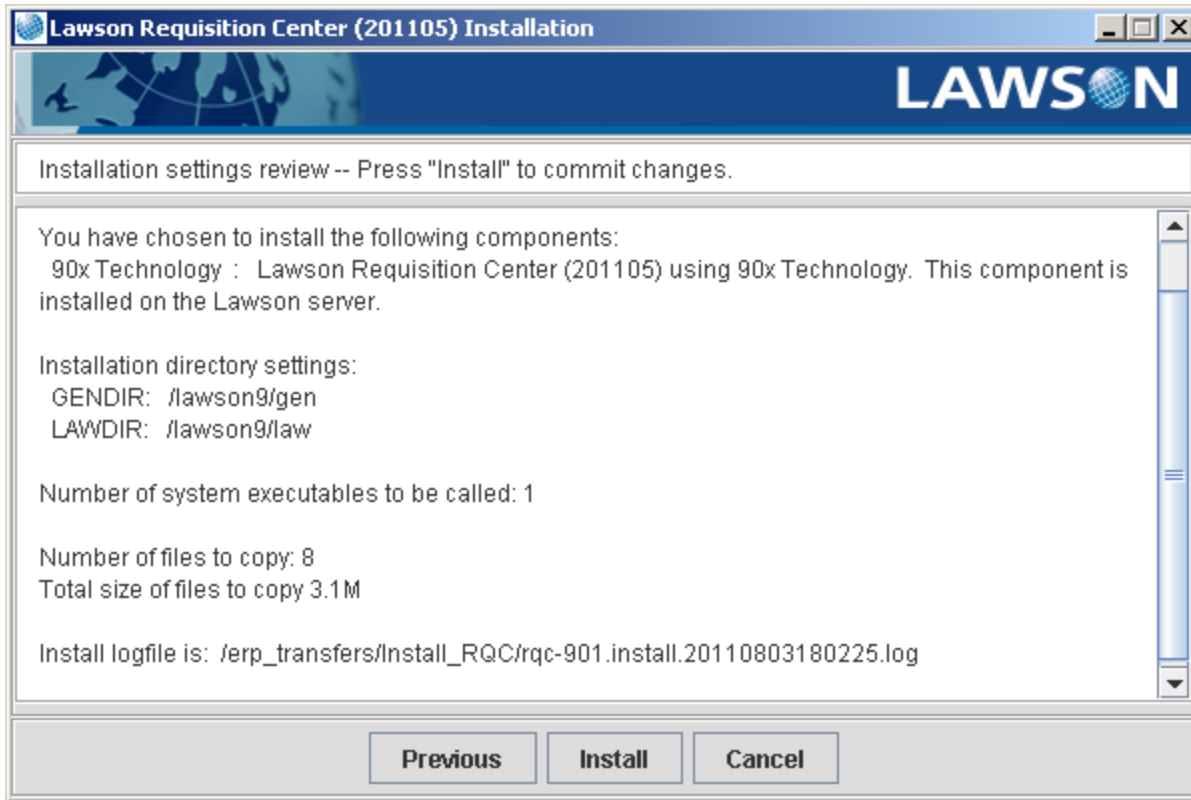
Browse to \$LAWDIR. The default path initially shown is the install directory.



Browse to /lawson9/ , highlighted law for LAWDIR, then pressed Select.



After pressing Select in previous screen.  
Press Next.

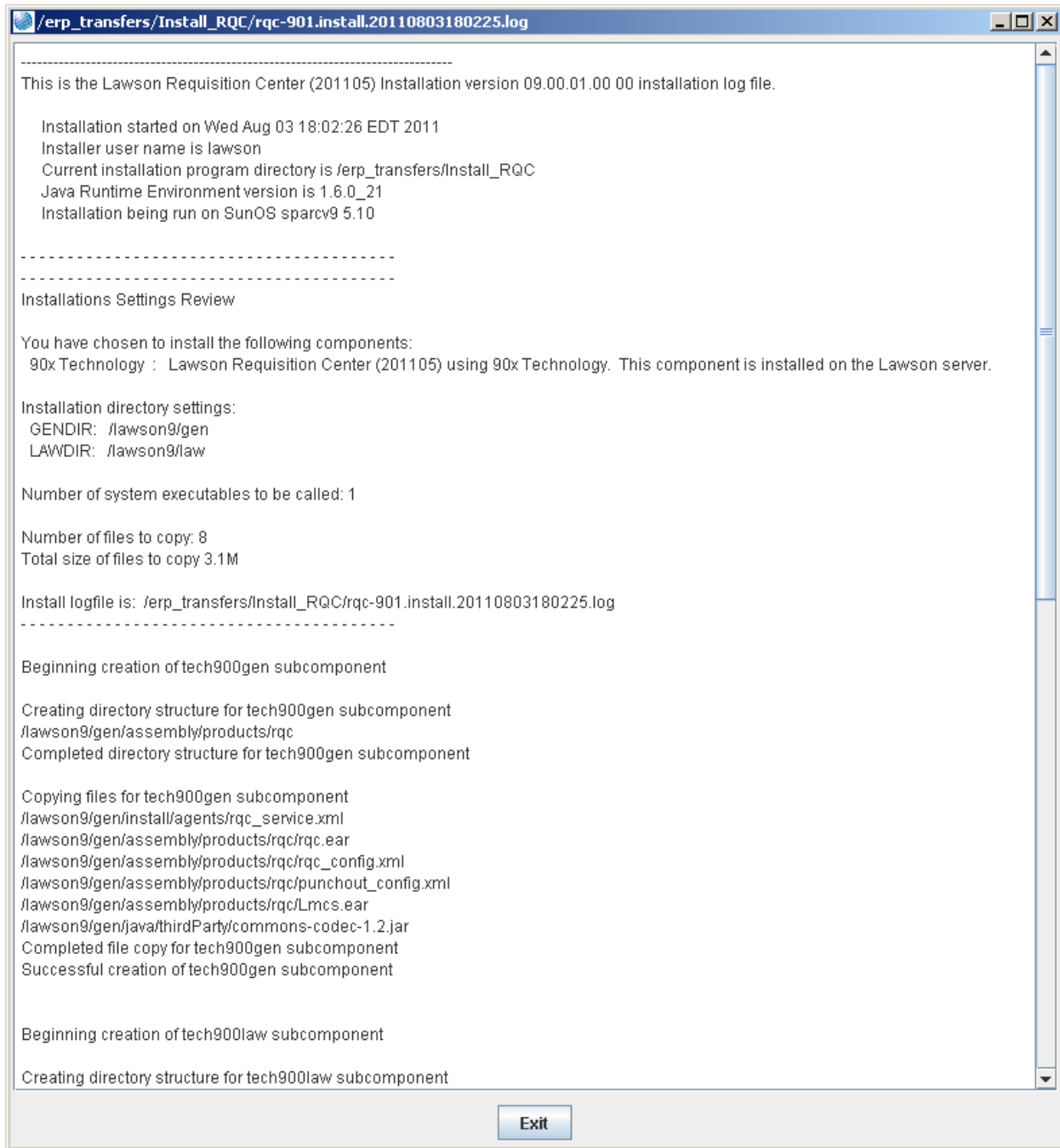


**Verify Values:** Press "Install".



**Check the Log File:** After installation program ran. Press View Log.

## rqc-install-lawsonsrv.doc



Screenshot of log file above. Full contents of log file are below:

```
-----  
This is the Lawson Requisition Center (201105) Installation version 09.00.01.00 00  
installation log file.
```

```
Installation started on Wed Aug 03 18:02:26 EDT 2011  
Installer user name is lawson  
Current installation program directory is /erp_transfers/Install_RQC  
Java Runtime Environment version is 1.6.0_21  
Installation being run on SunOS sparcv9 5.10  
  
-----
```



## rqc-install-lawsonsrv.doc

-----  
Installations Settings Review

You have chosen to install the following components:

90x Technology : Lawson Requisition Center (201105) using 90x Technology.  
This component is installed on the Lawson server.

Installation directory settings:

GENDIR: /lawson9/gen  
LAWDIR: /lawson9/law

Number of system executables to be called: 1

Number of files to copy: 8

Total size of files to copy 3.1M

Install logfile is: /erp\_transfers/Install\_RQC/rqc-901.install.20110803180225.log  
-----

Beginning creation of tech900gen subcomponent

Creating directory structure for tech900gen subcomponent  
/lawson9/gen/assembly/products/rqc  
Completed directory structure for tech900gen subcomponent

Copying files for tech900gen subcomponent  
/lawson9/gen/install/agents/rqc\_service.xml  
/lawson9/gen/assembly/products/rqc/rqc.ear  
/lawson9/gen/assembly/products/rqc/rqc\_config.xml  
/lawson9/gen/assembly/products/rqc/punchout\_config.xml  
/lawson9/gen/assembly/products/rqc/Lmcs.ear  
/lawson9/gen/java/thirdParty/commons-codec-1.2.jar  
Completed file copy for tech900gen subcomponent  
Successful creation of tech900gen subcomponent

Beginning creation of tech900law subcomponent

Creating directory structure for tech900law subcomponent  
Completed directory structure for tech900law subcomponent

Copying files for tech900law subcomponent  
/lawson9/law/logan/work/LAWSONLD/LAWSONLD.shopping.csv  
Completed file copy for tech900law subcomponent  
Successful creation of tech900law subcomponent

Beginning creation of version subcomponent

Creating directory structure for version subcomponent  
Completed directory structure for version subcomponent

Copying files for version subcomponent  
/lawson9/law/logan/Admin/logan.rqc.bkmk  
Completed file copy for version subcomponent  
Successful creation of version subcomponent

Beginning system executables.

rqc-install-lawsonsrv.doc

Executable report for impexp:

Return code: 0

impexp standard output: Loading VERSION ... 1 records processed.

impexp standard output: Loading from /lawson9/law/logan/Admin/logan.rqc.bkmk

impexp standard output: File Processed Added Duplicate Match

Changed Bad

impexp standard output: ---- -

----- ---

impexp standard output: VERSION 1 1 0 0

0 0

impexp completed execution.

Done running 1 executables.

-----

Installation activity completed.

No errors were detected.

Installation Summary:

Total number of directories created: 1

Total number of files created: 8

---

---

End of Log file.

**Page 10: Define the working directory and technology information in rqc\_config.xml:**

```
xterm
drwxrwxrwx  2 nobody  nobody    512 May  4 08:01 META-INF/
-rw-rw-rw-  1 nobody  nobody   3625 Jun  3 12:16 rqc-901.install.2011060312
1337.log
-rw-rw-rw-  1 nobody  nobody    803 Aug  3 17:50 rqc-901.install.2011080317
4736.log
-rw-rw-rw-  1 nobody  nobody    803 Aug  3 17:52 rqc-901.install.2011080317
5145.log
-rw-r--r--  1 nobody  nobody  9632245 Jun  3 12:10 w-0900010000-RQC.zip
-rw-rw-rw-  1 nobody  nobody  9634161 May  4 08:01 w-rqc-901.jar
[lawsonsrv:lawson:/var/home/lawson] java -jar w-rqc-901.jar
Initializing the install. Please wait.
Java Accessibility Bridge for GNOME loaded.

[lawsonsrv:lawson:/var/home/lawson] cd $GENDIR/assembly/products/rqc
[lawsonsrv:lawson:/var/home/lawson] ls
Lmcs.ear          rqc_config.xml
punchout_config.xml  rqc.ear
[lawsonsrv:lawson:/var/home/lawson] ls -l
total 6138
-rw-rw-rw-  1 lawson  lawson    4209 Aug  3 18:06 Lmcs.ear
-rw-rw-rw-  1 lawson  lawson    8348 Aug  3 18:06 punchout_config.xml
-rw-rw-rw-  1 lawson  lawson    6365 Aug  3 18:06 rqc_config.xml
-rw-rw-rw-  1 lawson  lawson  3107209 Aug  3 18:06 rqc.ear
[lawsonsrv:lawson:/var/home/lawson]
```

```
xterm
-rw-rw-rw-  1 nobody  nobody   3625 Jun  3 12:16 rqc-901.install.2011060312
1337.log
-rw-rw-rw-  1 nobody  nobody    803 Aug  3 17:50 rqc-901.install.2011080317
4736.log
-rw-rw-rw-  1 nobody  nobody    803 Aug  3 17:52 rqc-901.install.2011080317
5145.log
-rw-r--r--  1 nobody  nobody  9632245 Jun  3 12:10 w-0900010000-RQC.zip
-rw-rw-rw-  1 nobody  nobody  9634161 May  4 08:01 w-rqc-901.jar
[lawsonsrv:lawson:/var/home/lawson] java -jar w-rqc-901.jar
Initializing the install. Please wait.
Java Accessibility Bridge for GNOME loaded.

[lawsonsrv:lawson:/var/home/lawson] cd $GENDIR/assembly/products/rqc
[lawsonsrv:lawson:/var/home/lawson] ls
Lmcs.ear          rqc_config.xml
punchout_config.xml  rqc.ear
[lawsonsrv:lawson:/var/home/lawson] ls -l
total 6138
-rw-rw-rw-  1 lawson  lawson    4209 Aug  3 18:06 Lmcs.ear
-rw-rw-rw-  1 lawson  lawson    8348 Aug  3 18:06 punchout_config.xml
-rw-rw-rw-  1 lawson  lawson    6365 Aug  3 18:06 rqc_config.xml
-rw-rw-rw-  1 lawson  lawson  3107209 Aug  3 18:06 rqc.ear
[lawsonsrv:lawson:/var/home/lawson] cp rqc_config.xml $LAWDIR/system
[lawsonsrv:lawson:/var/home/lawson]
```

**Step 1:** Copy [\$GENDIR/assembly/products/rqc]/rqc\_config.xml to \$LAWDIR/system.

(I did a “cd \$GENDIR/assembly/products/rqc” then copied rqc\_config.xml as required).

```

xterm
1337.log
-rw-rw-rw- 1 nobody  nobody    803 Aug  3 17:50 rqc-901.install.2011080317
4736.log
-rw-rw-rw- 1 nobody  nobody    803 Aug  3 17:52 rqc-901.install.2011080317
5145.log
-rw-r--r-- 1 nobody  nobody   9632245 Jun  3 12:10 w-0900010000-RQC.zip
-rw-rw-rw- 1 nobody  nobody   9634161 May  4 08:01 w-rqc-901.jar
[lawsonsrv:lawson:/var/home/lawson]> java -jar w-rqc-901.jar
Initializing the install. Please wait.
Java Accessibility Bridge for GNOME loaded.

[lawsonsrv:lawson:/var/home/lawson]> cd $GENDIR/assembly/products/rqc
[lawsonsrv:lawson:/var/home/lawson]> ls
Lmcs.ear          rqc_config.xml
punchout_config.xml  rqc.ear
[lawsonsrv:lawson:/var/home/lawson]> ls -l
total 6138
-rw-rw-rw- 1 lawson  lawson    4209 Aug  3 18:06 Lmcs.ear
-rw-rw-rw- 1 lawson  lawson    8348 Aug  3 18:06 punchout_config.xml
-rw-rw-rw- 1 lawson  lawson    6365 Aug  3 18:06 rqc_config.xml
-rw-rw-rw- 1 lawson  lawson  3107209 Aug  3 18:06 rqc.ear
[lawsonsrv:lawson:/var/home/lawson]> cp rqc_config.xml $LAWDIR/system
[lawsonsrv:lawson:/var/home/lawson]> cd $LAWDIR/system
[lawsonsrv:lawson:/var/home/lawson]> vi rqc_config.xml

```

**Step 2: Open the rqc\_config.xml file with a text editor:** I did “vi rqc\_config.xml”.

The screenshot shows a Notepad window titled "Host: lawsondev <0>". The menu bar includes File, Edit, View, Setup, Window, and Help. The toolbar contains icons for file operations and editing. The main text area contains XML code for configuring the RQC work directory. A specific line is highlighted in black:

```

<setting id="work_directory" value="/lawson9/law/RQC_work"/>

```

Other visible code includes:

```

.foundation.authQC_workcAuthenManagerImpl"/>
    <technology id="ios" value="com.lawson.webapp.foundation

.ios.ios803.IOS803ManagerImpl"/>
    </setting>
    --> <technology id="authentication" value="com.lawson.webapp
    <setting id="technology" value="9.0.0">
.foundation.authen.SSOAuthenManagerImpl"/>
    <technology id="ios" value="com.lawson.webapp.foundation

.ios.ios900.IOS900ManagerImpl"/>
    </setting>
<!-- MUST BE DEFINED! -->
    <setting id="b2b_server" value="http://your.remote_punchout_serv
er.name:port"/> <!-- Must be defined if using Punchout -->
    <setting name="LWSN" id="b2b_service" value="/punchout/remoteServlet/Pun
choutSetupRequest"/>
    </server>
    <punchout>
    <!-- For clients using Punchout, place your configurations here, between the
<punchout> tags and the ending rss tag (</rss>)-->
    </punchout>

```

At the bottom of the window, there are input fields for "NUM" and "Open".

**Steps 3 and 4:** Define the work directory value. I used /lawson9/law/RQC\_work.

**VERY IMPORTANT:** Manually create the work directory. I forgot to create the directory at this point, fortunately I was able to come back and create it).

```

                                <technology id="ios" value="com.lawson.webapp.foundation.ios.ios803.IOS803Mana
gerImpl"/>
                                </setting>
                                -->
                                <setting id="technology" value="9.0.0">
                                <technology id="authentication" value="com.lawson.webapp.foundation.authen.SSO
AuthenManagerImpl"/>
                                <technology id="ios" value="com.lawson.webapp.foundation.ios.ios900.IOS900Mana
gerImpl"/>
                                </setting>
                                <setting id="work_directory" value="/lawson9/law/RQC_wor" />    <!-- MUST BE DEFINED!
-->
                                <setting id="b2b_server" value="http://your.remote.punchout_server.name;port"/> <!-- M
ust be defined if using Punchout -->
                                <setting name="LWSN" id="b2b_service" value="/punchout/remoteServlet/PunchoutSetupRequest"/>
                                </server>
                                <punchout>
                                <!-- For clients using Punchout, place your configurations here, between the <punchout> tags and t
he ending rss tag (</rss>)-->
                                </punchout>
                                </rss>
                                ~
                                ~

```

**Step 5:** Verify the correct technology section is being used: In the above screen the 5<sup>th</sup> line down  
 <setting id = "technology" value="9.0.0">

is not preceded by <!-- .

If the line was immediately preceded by <!-- , that would indicate the beginning of an XML comment.

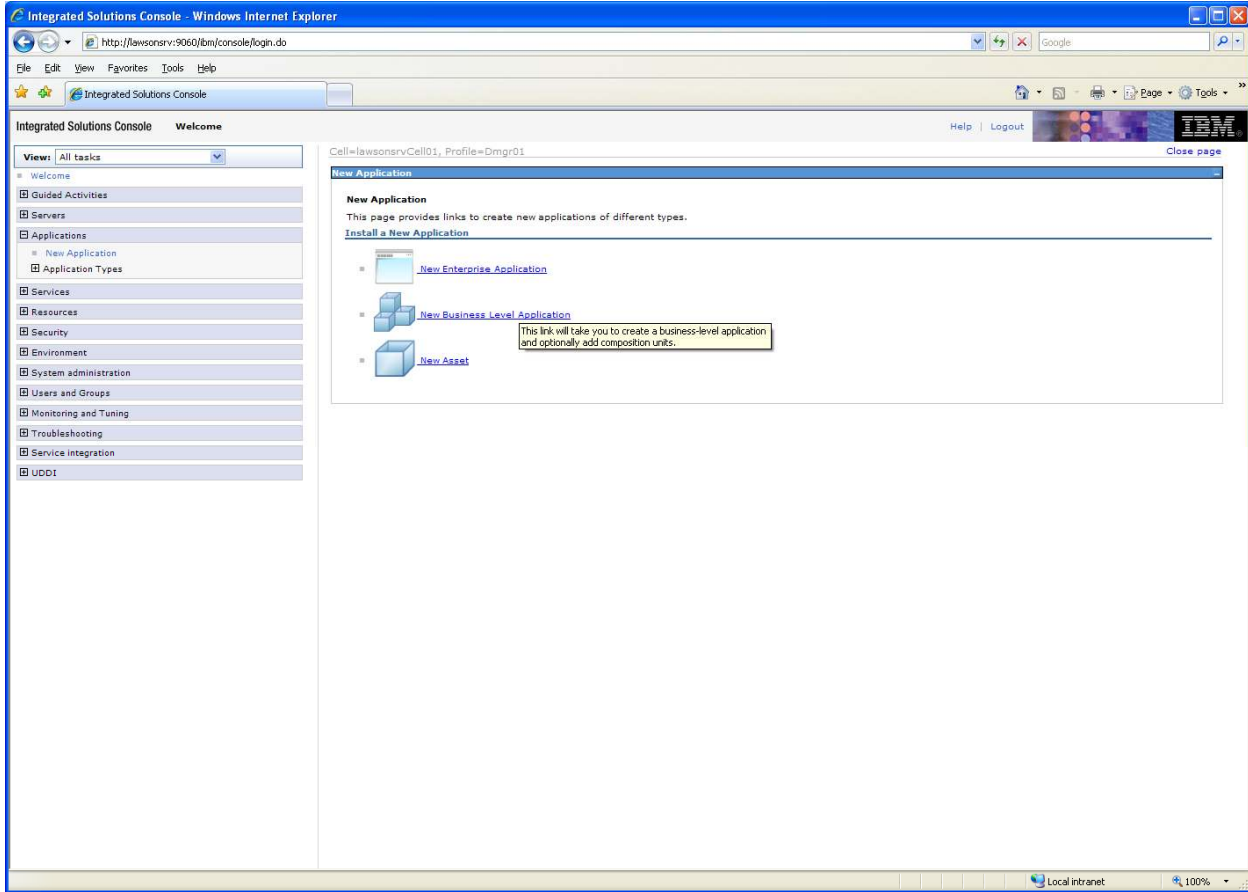
```

                                <setting id="technology" value="8.0.3">
                                <technology id="authentication" value="com.lawson.webapp.foundation.authen.Bas
icAuthenManagerImpl"/>
                                <technology id="ios" value="com.lawson.webapp.foundation.ios.ios803.IOS803Mana
gerImpl"/>
                                </setting>
                                -->
                                <setting id="technology" value="9.0.0">
                                <technology id="authentication" value="com.lawson.webapp.foundation.authen.SSO
AuthenManagerImpl"/>
                                <technology id="ios" value="com.lawson.webapp.foundation.ios.ios900.IOS900Mana
gerImpl"/>
                                </setting>
                                <setting id="work_directory" value="/lawson9/law/RQC_work"/>    <!-- MUST BE DEFINED!
-->
                                <setting id="b2b_server" value="http://your.remote.punchout_server.name;port"/> <!-- M
ust be defined if using Punchout -->
                                <setting name="LWSN" id="b2b_service" value="/punchout/remoteServlet/PunchoutSetupRequest"/>
                                </server>
                                <punchout>
                                <!-- For clients using Punchout, place your configurations here, between the <punchout> tags and t
he ending rss tag (</rss>)-->
                                </punchout>
                                </rss>
                                "rqc_config.xml" 127 lines, 6386 characters
                                [lawsonsrv:lawson:/var/home/lawson]

```

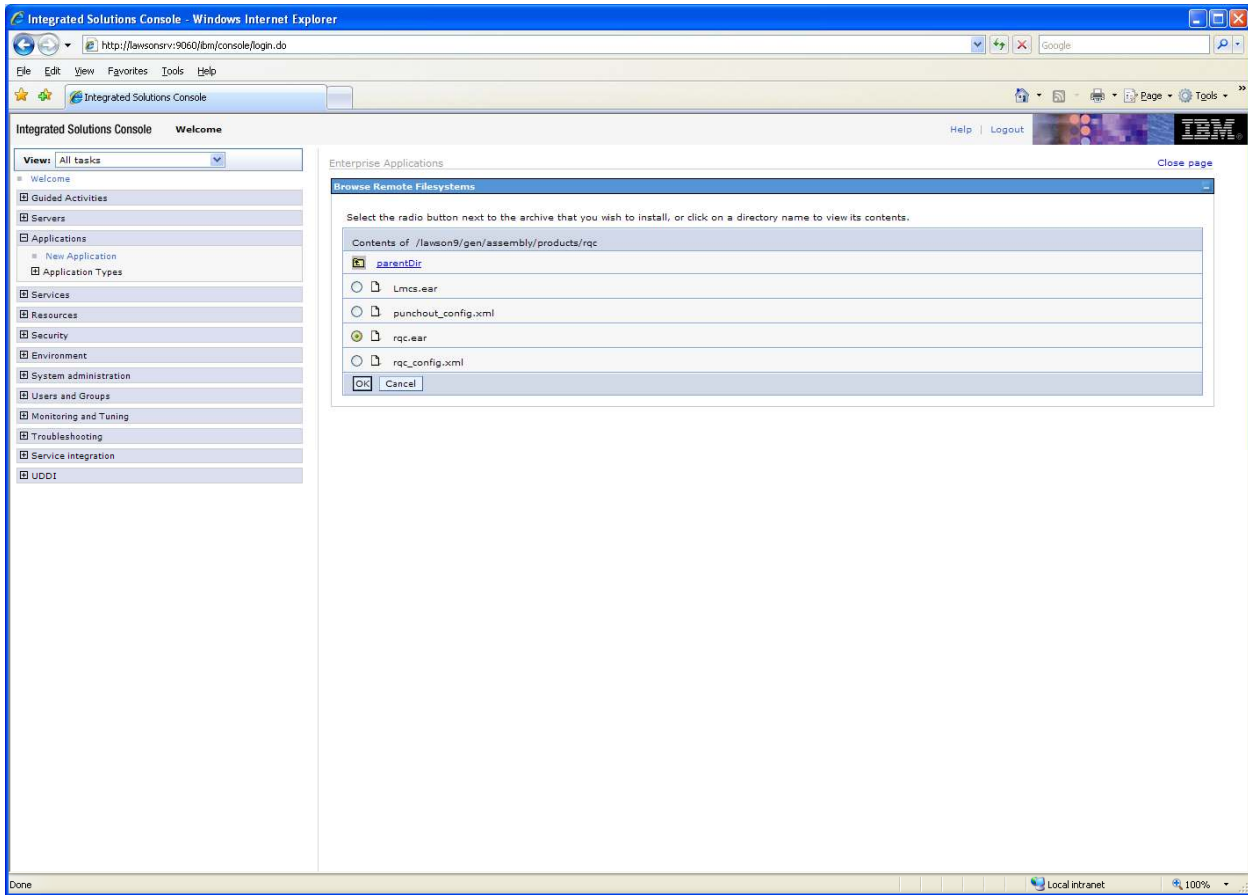
**Step 7:** Rqc\_config.xml after save and close.

**Page 10: Deploy the rqc.ear file on Websphere.** This statement is quite deceptive in its appearance as the next 10 pages of this document illustrate the steps I was required to deploy the rqc.ear file. It is sort of “... then magic happens”.



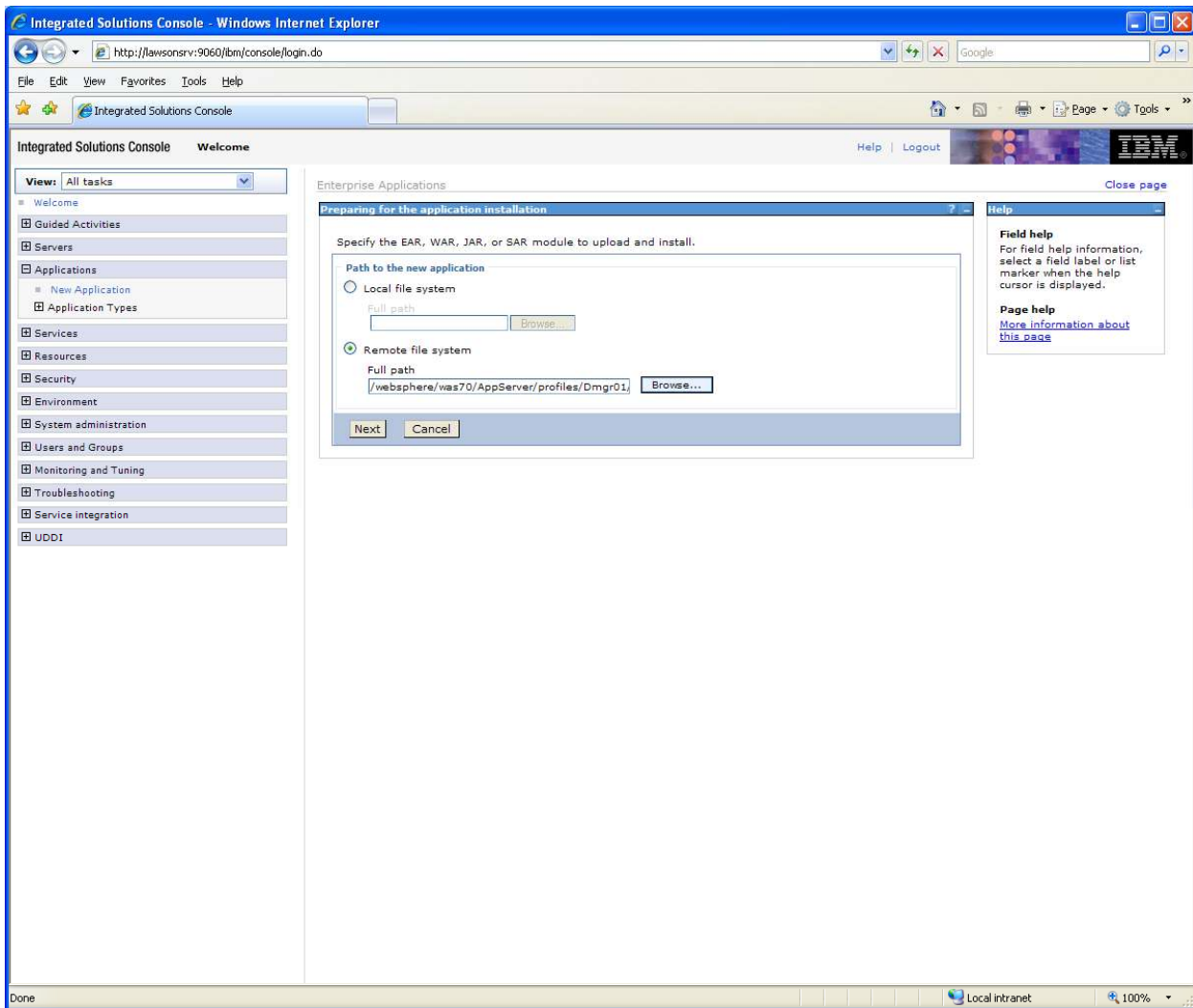
In IBM Websphere console:  
Select “Applications” -> “New Application”.

In the “New Application” frame click on “New Enterprise Application”.



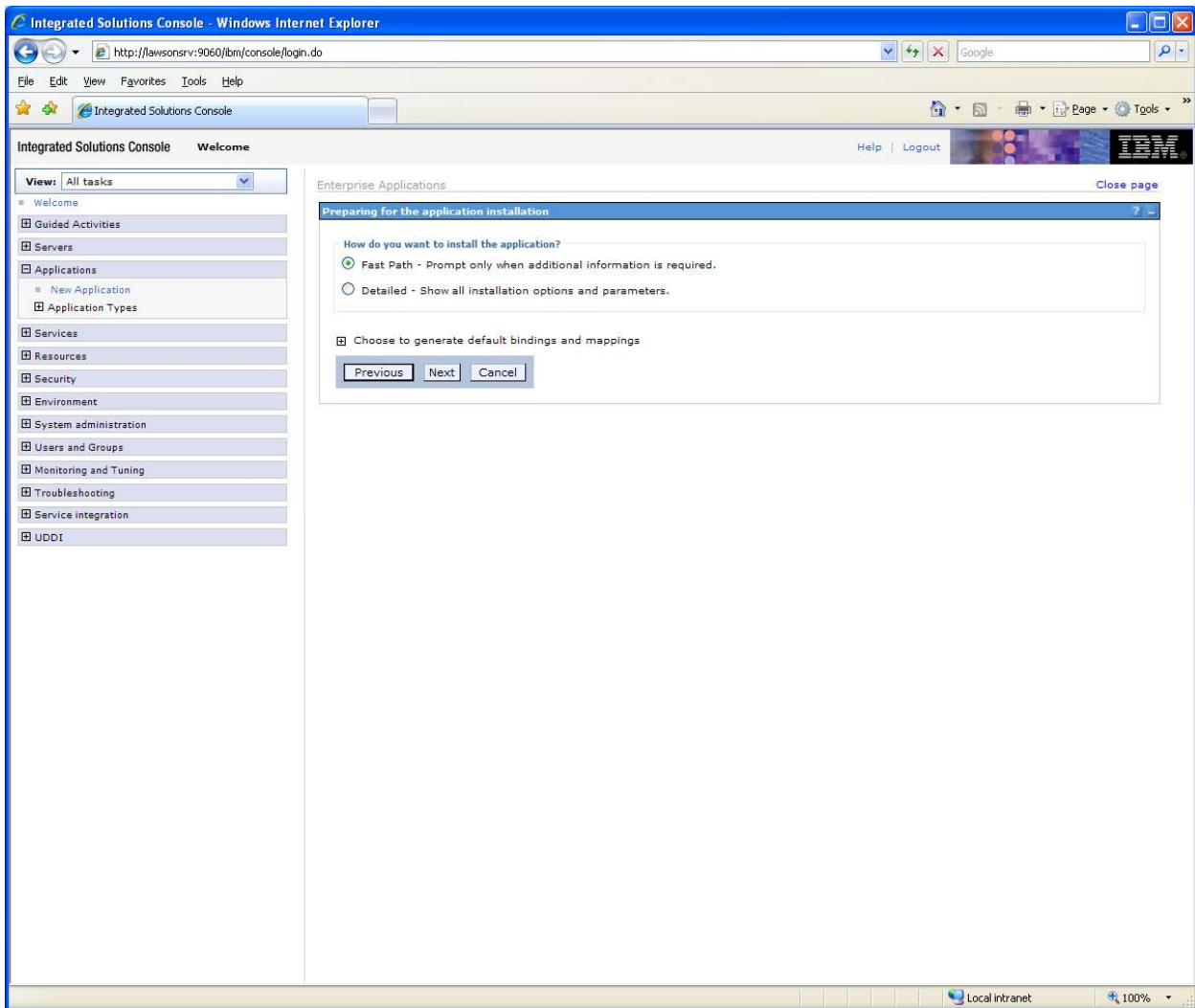
Selected "rqc.ear".  
Pressed OK.





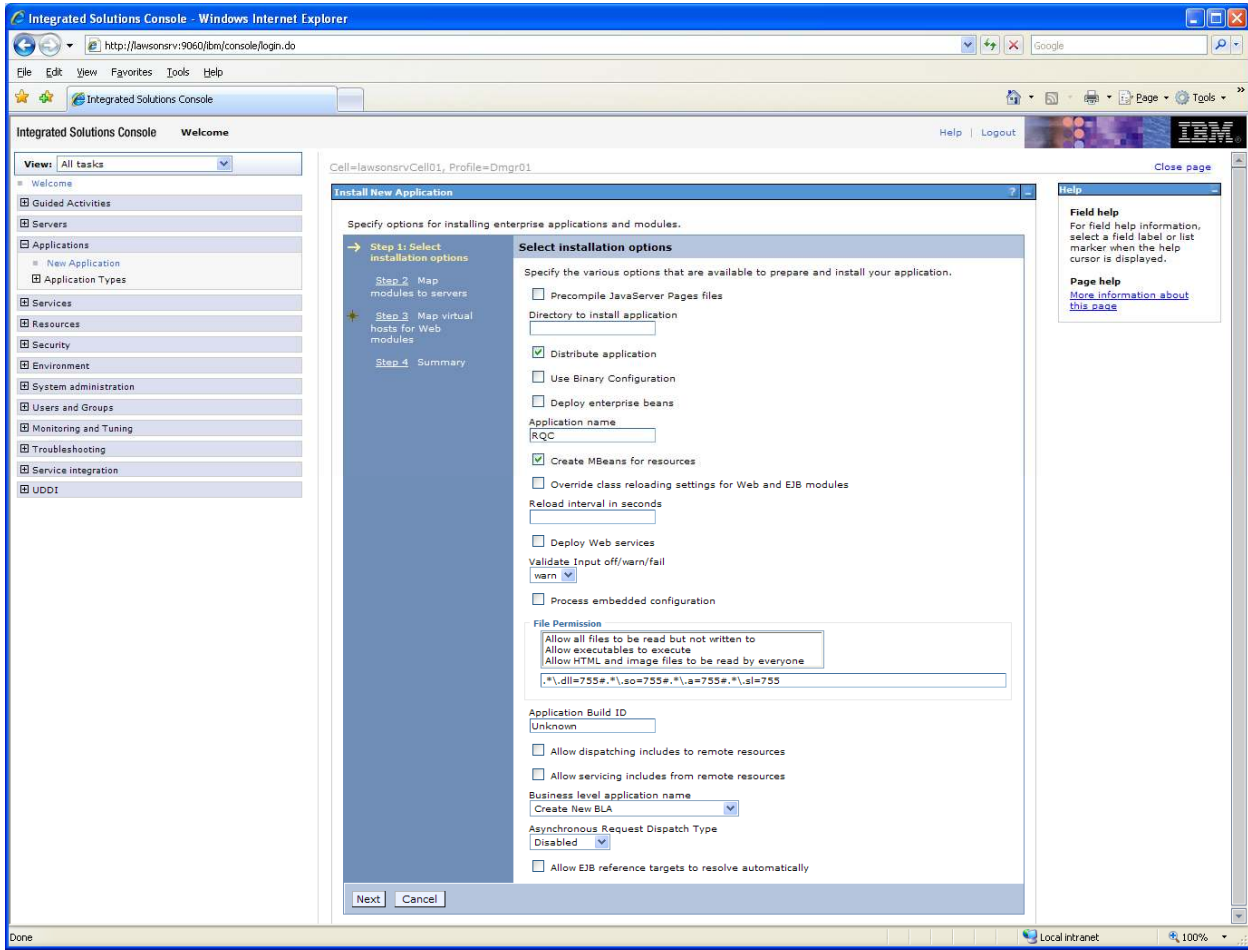
Select Remote File System and browse to location of “rqc.ear”. (Above screenshot does not show the directory structure of full path/file name of ear file).

Press Next.



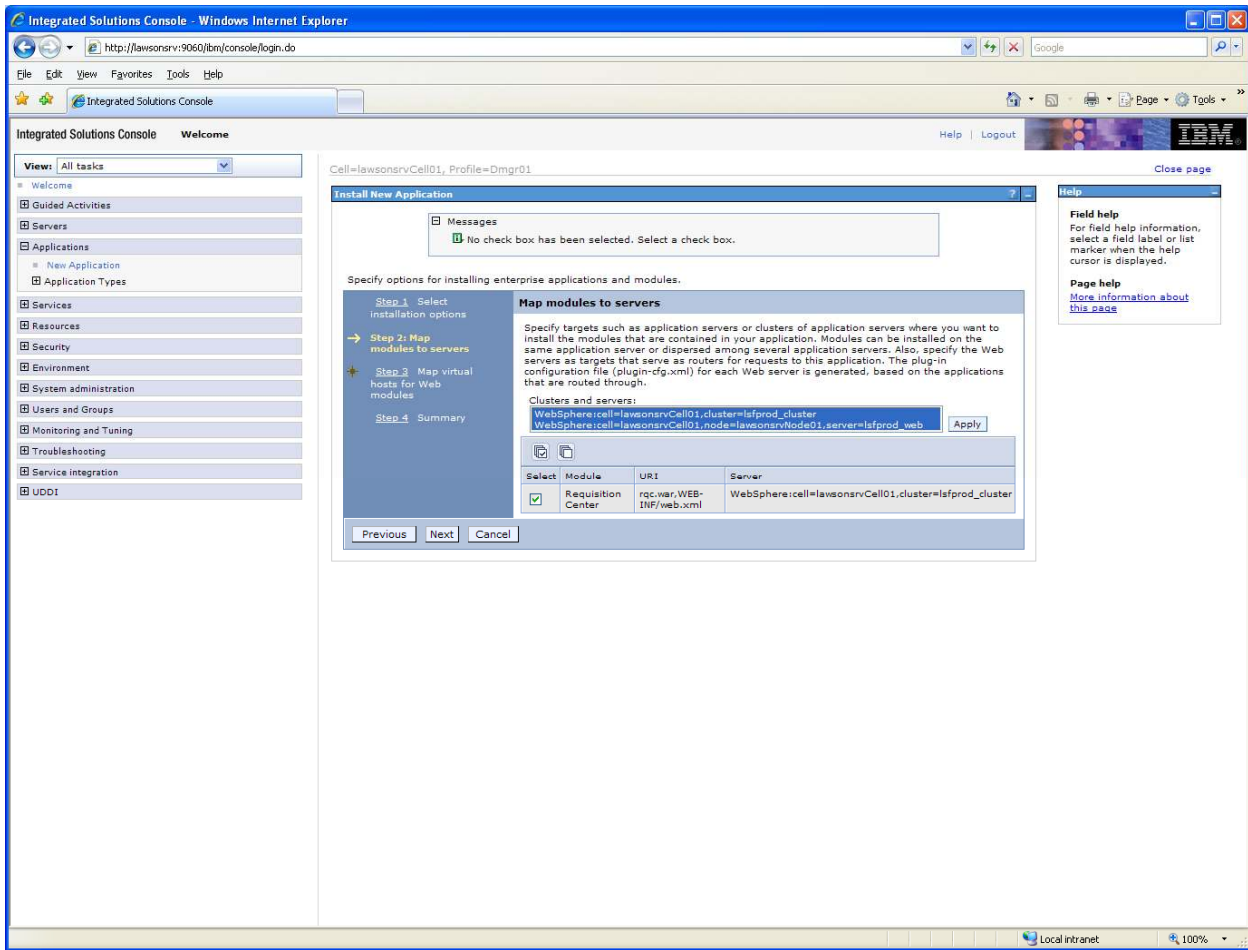
Selected "Fast Path". (I just guessed at this option).

Press Next.



Accepted default values.

Press Next.

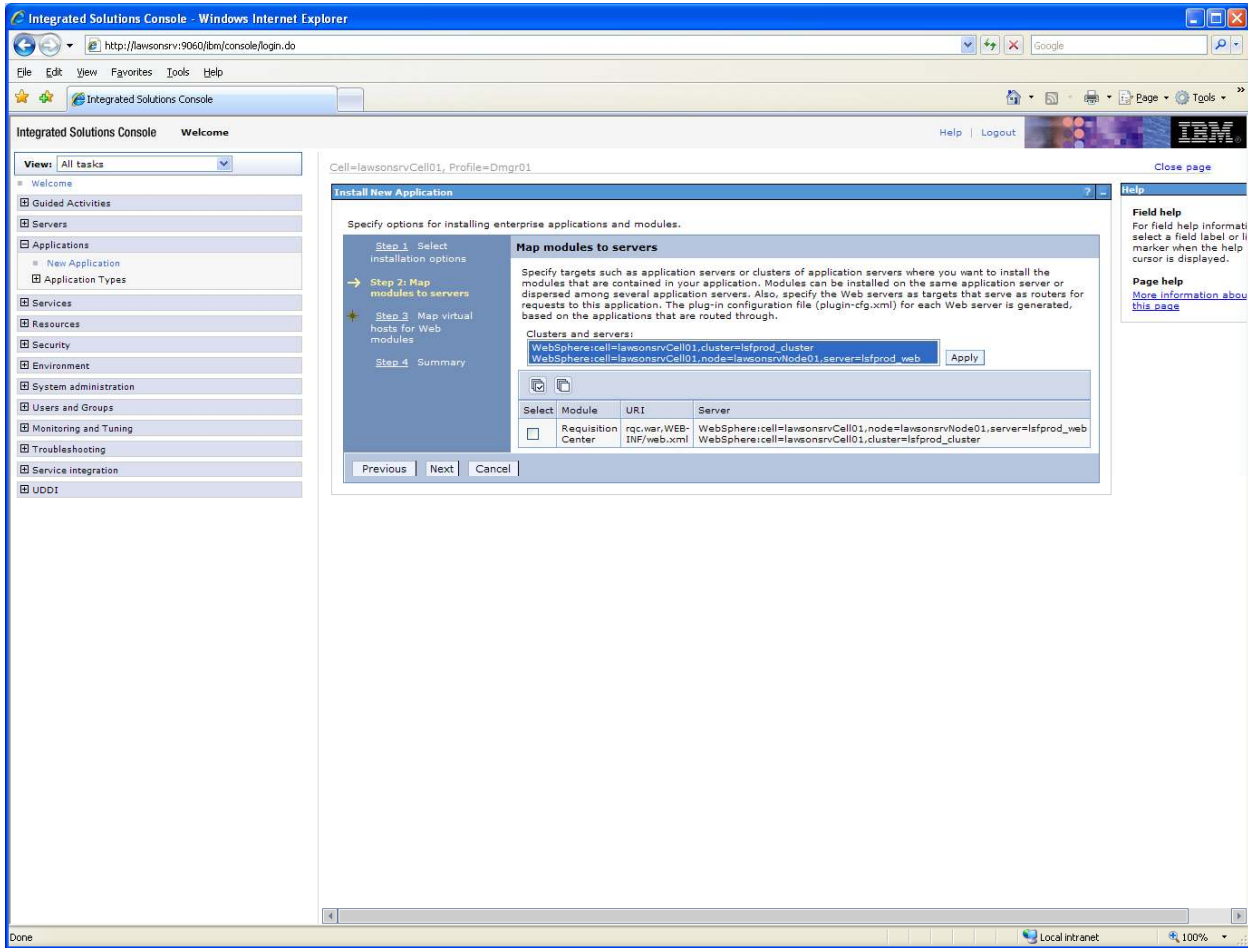


Highlight both Cluster and Node option.

In my development install I just highlighted the Node but after completing the installation and configuration my system did not come up correctly. I had to come back and highlight the Cluster option as well. Fortunately adding the Cluster was all that was required to correct the issue.

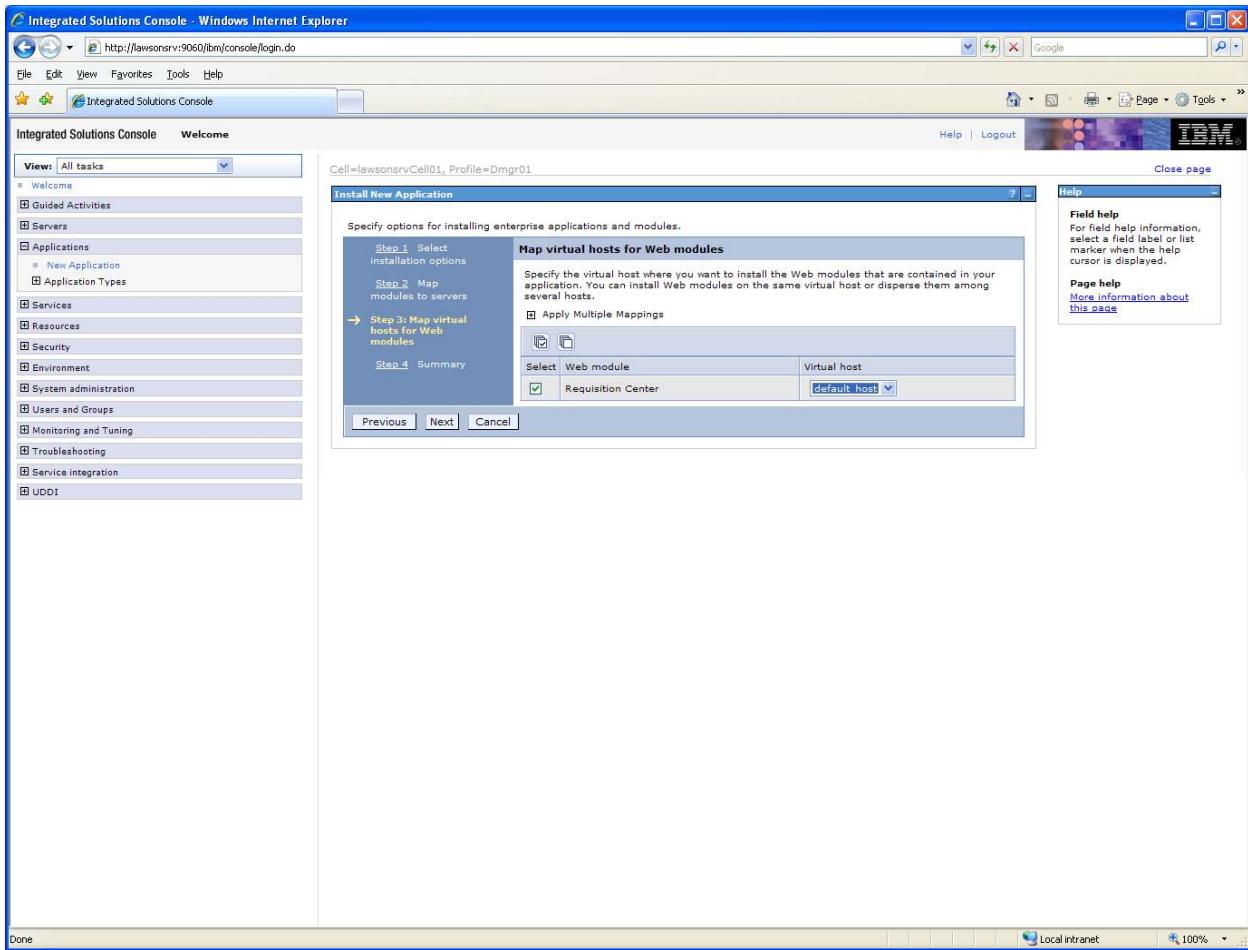
Make sure to “Select” the “Requisition Center” module.

Press “Apply”.



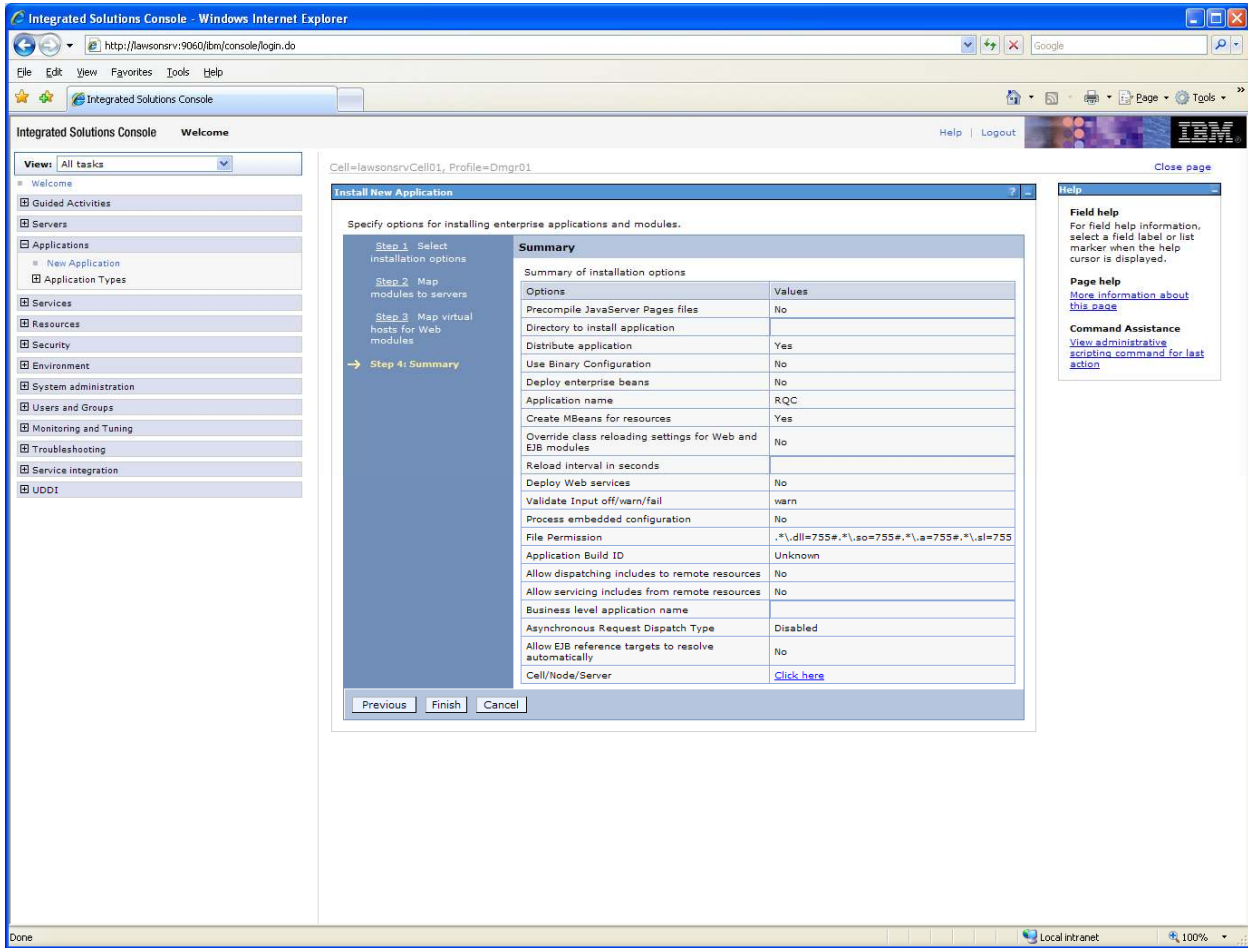
After “Apply” the selected servers will appear beside the Requisition Center module.

Press Next.



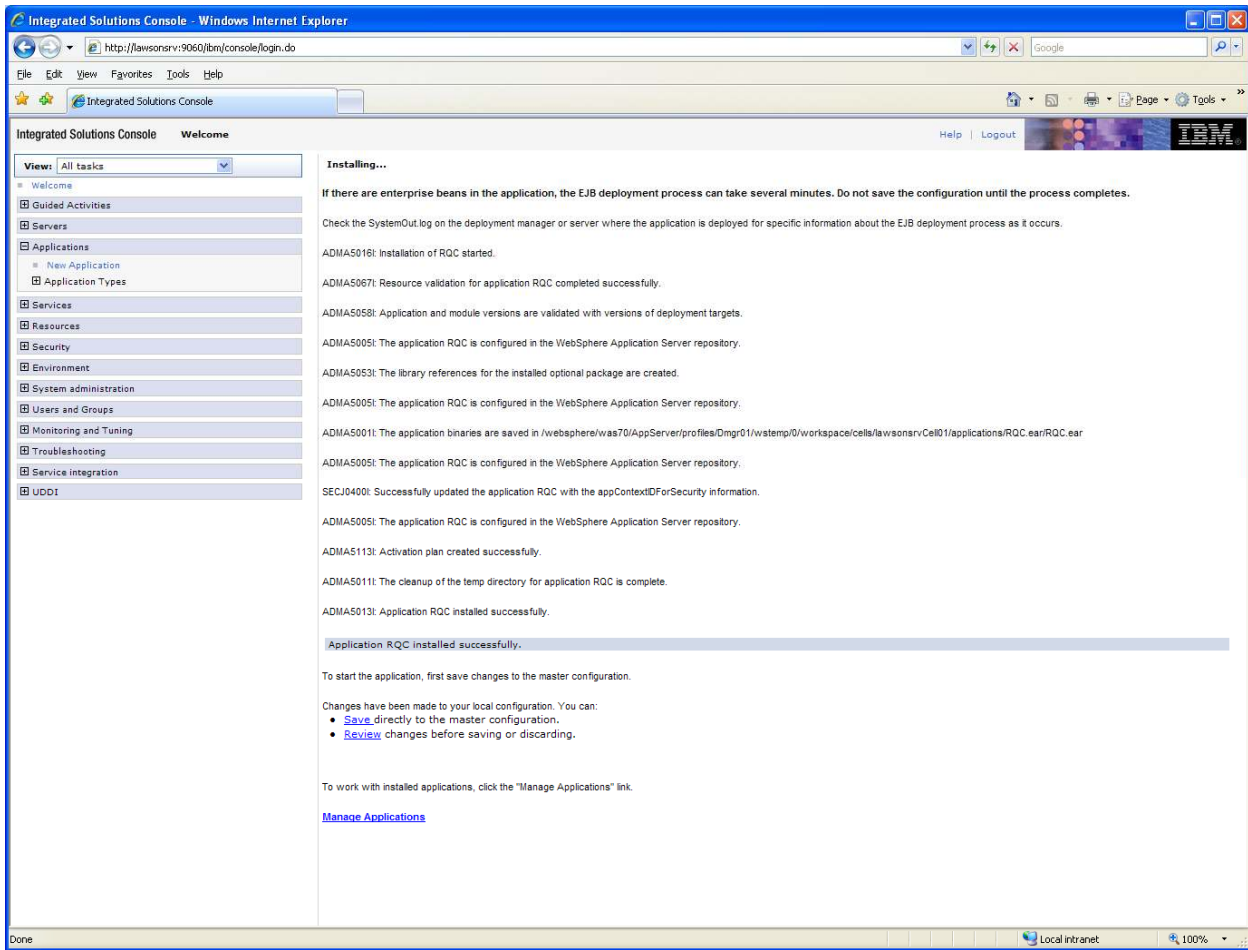
Select “Requisition Center” (if not selected by default).

Press Next.



Summary screen.

Press “Finish” if everything looks correct.



Screen that appeared following "Finish" .

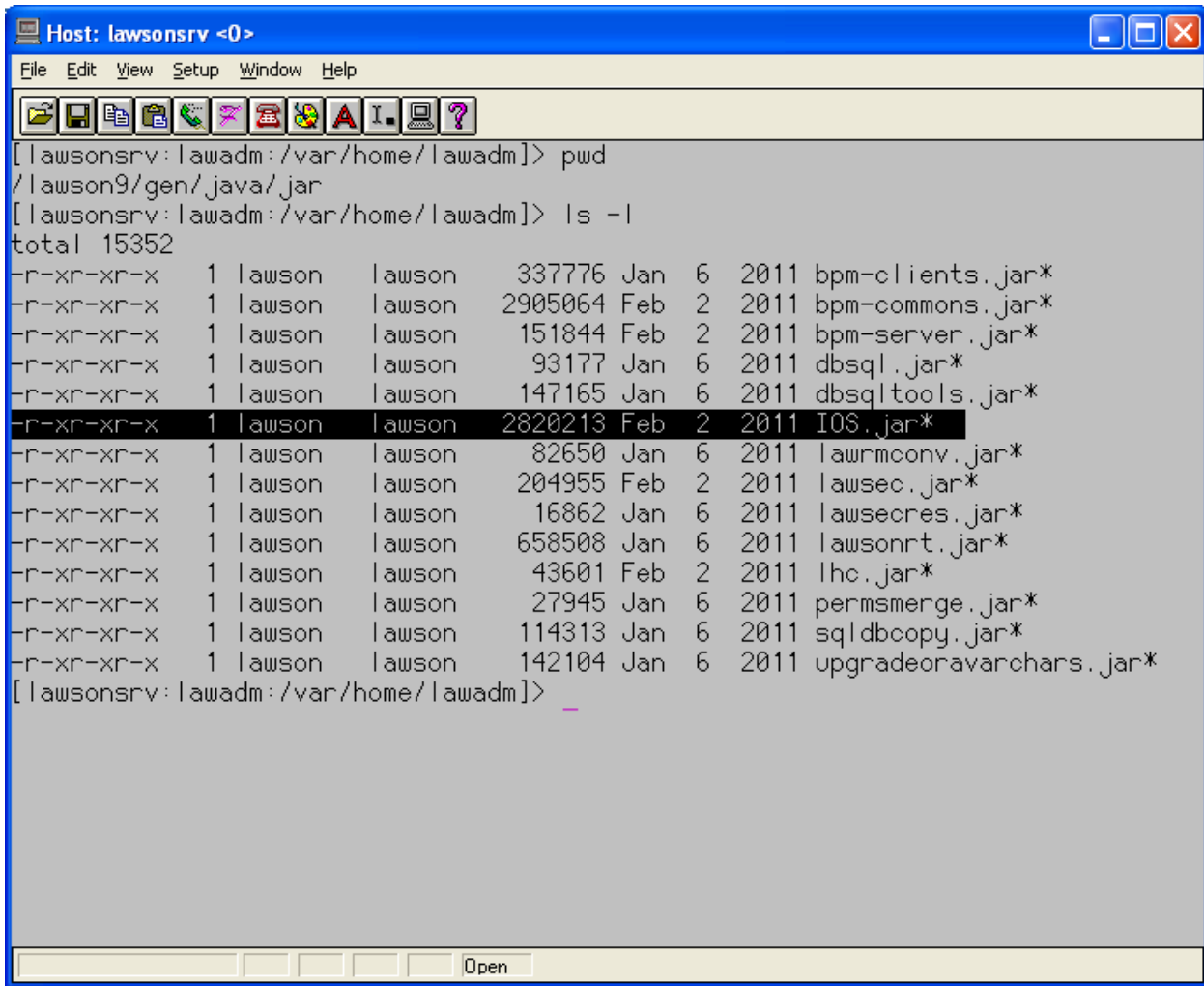
Press "Save".



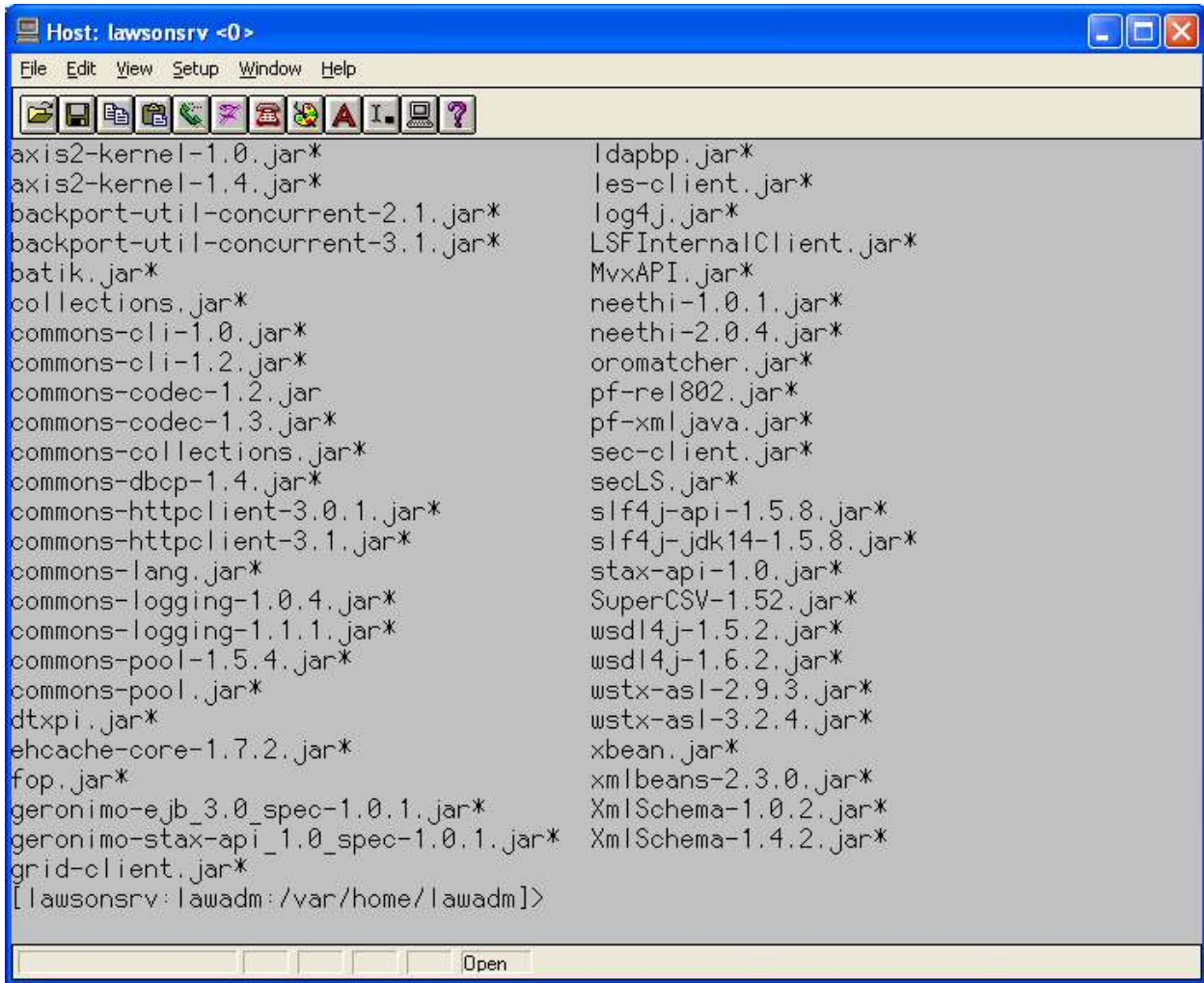
**Page 11: Post-Installation for Lawson Requisition Center.**

**Defining Shared Library Components in Websphere**

**Verify .jar file list**



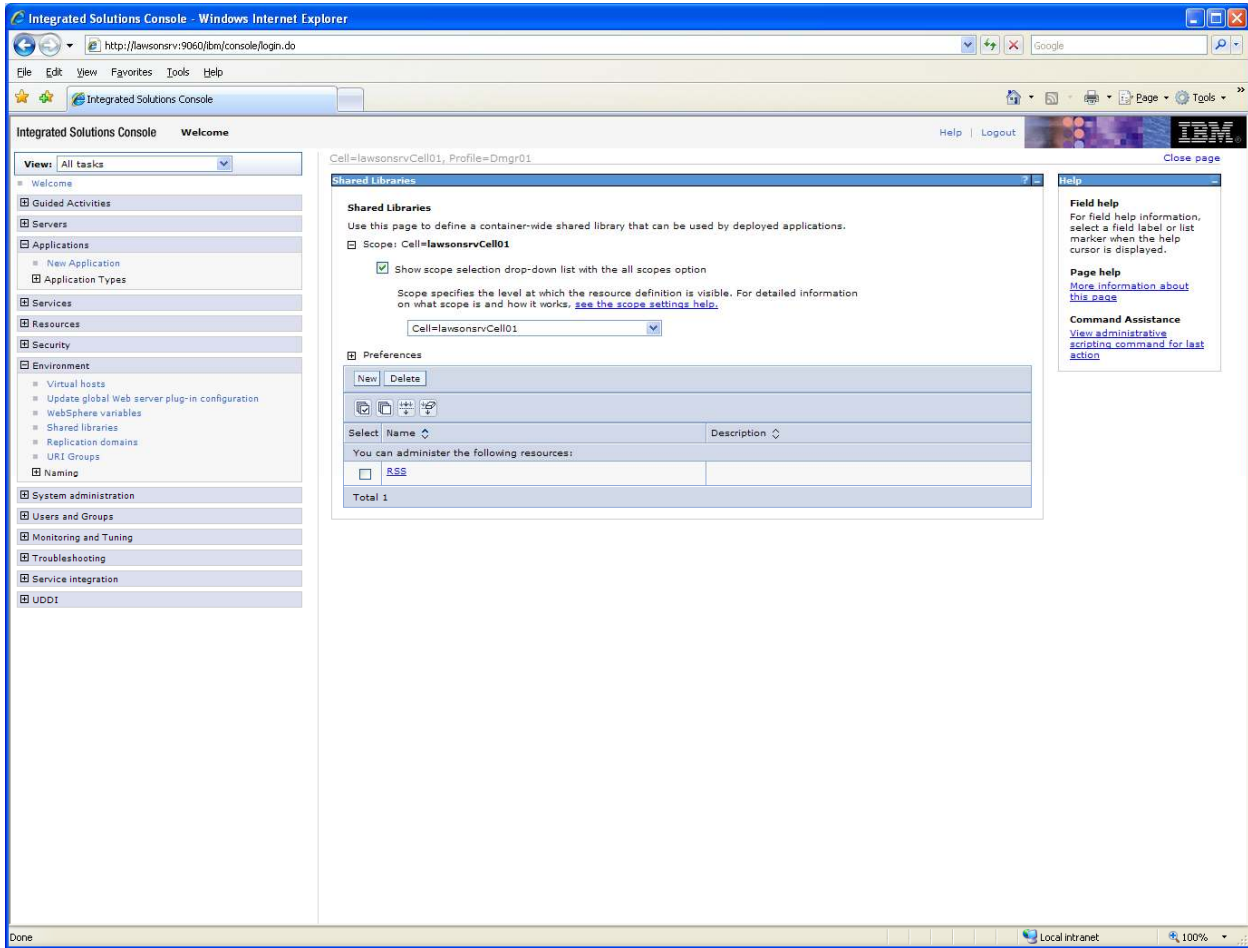
\$GENDIR/java/jar/IOS.jar above.



\$GENDIR/java/thirdParty above.

I did not have the “ehcache.jar” nor the “ehcache-1.5.0-lawson.jar” files.

**Page 12: Defining Requisition Center as a shared library for WebSphere 7.0**

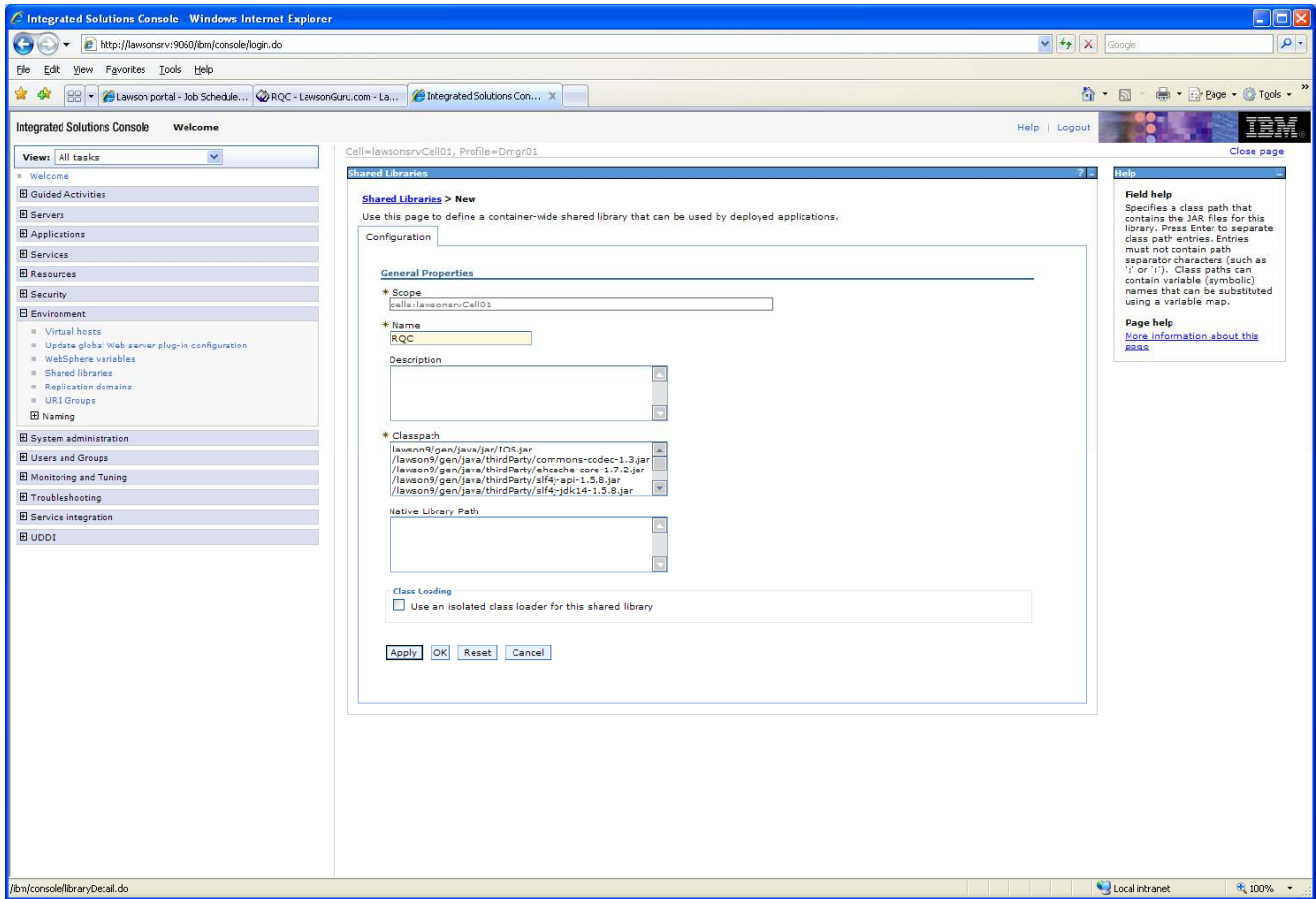


**Step1:** Go to Environment , click Shared libraries.

Screenshot above shows “RSS”.

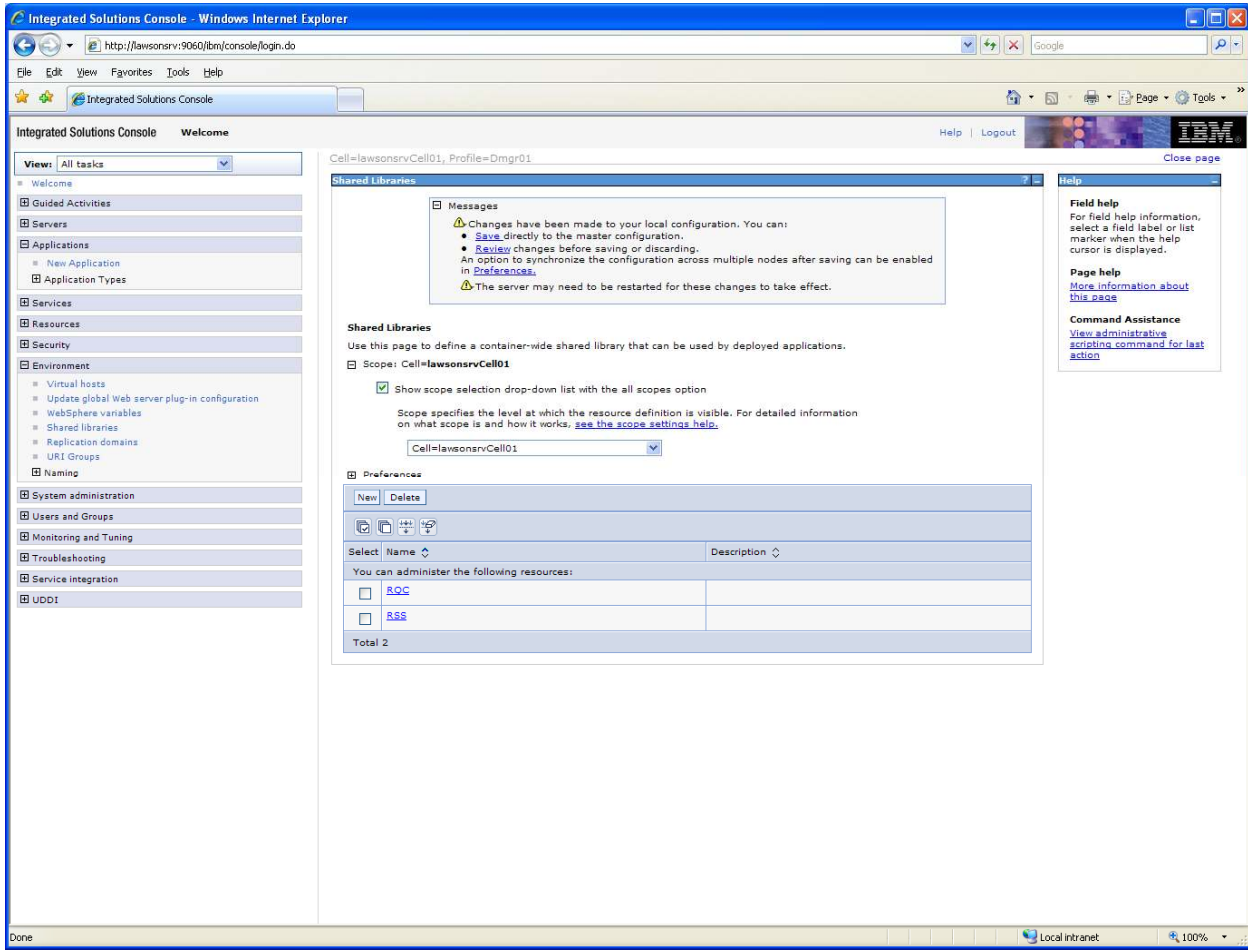
**Step 2:** Verify scope section. Make sure Cell=... is visible.

**Step3:** Click New

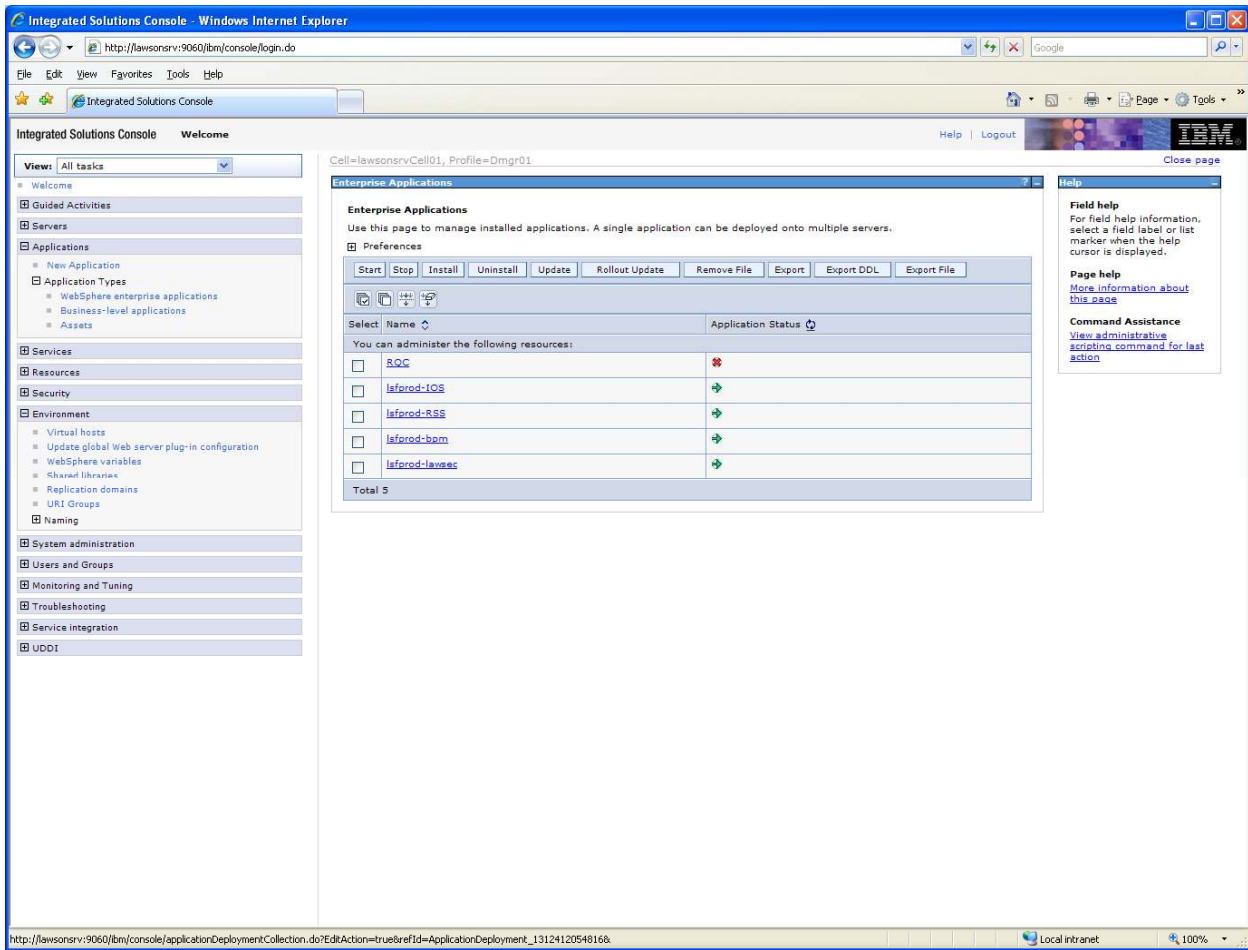


**Step 4:** Fill in name “RQC” and classpath values.

Click OK.



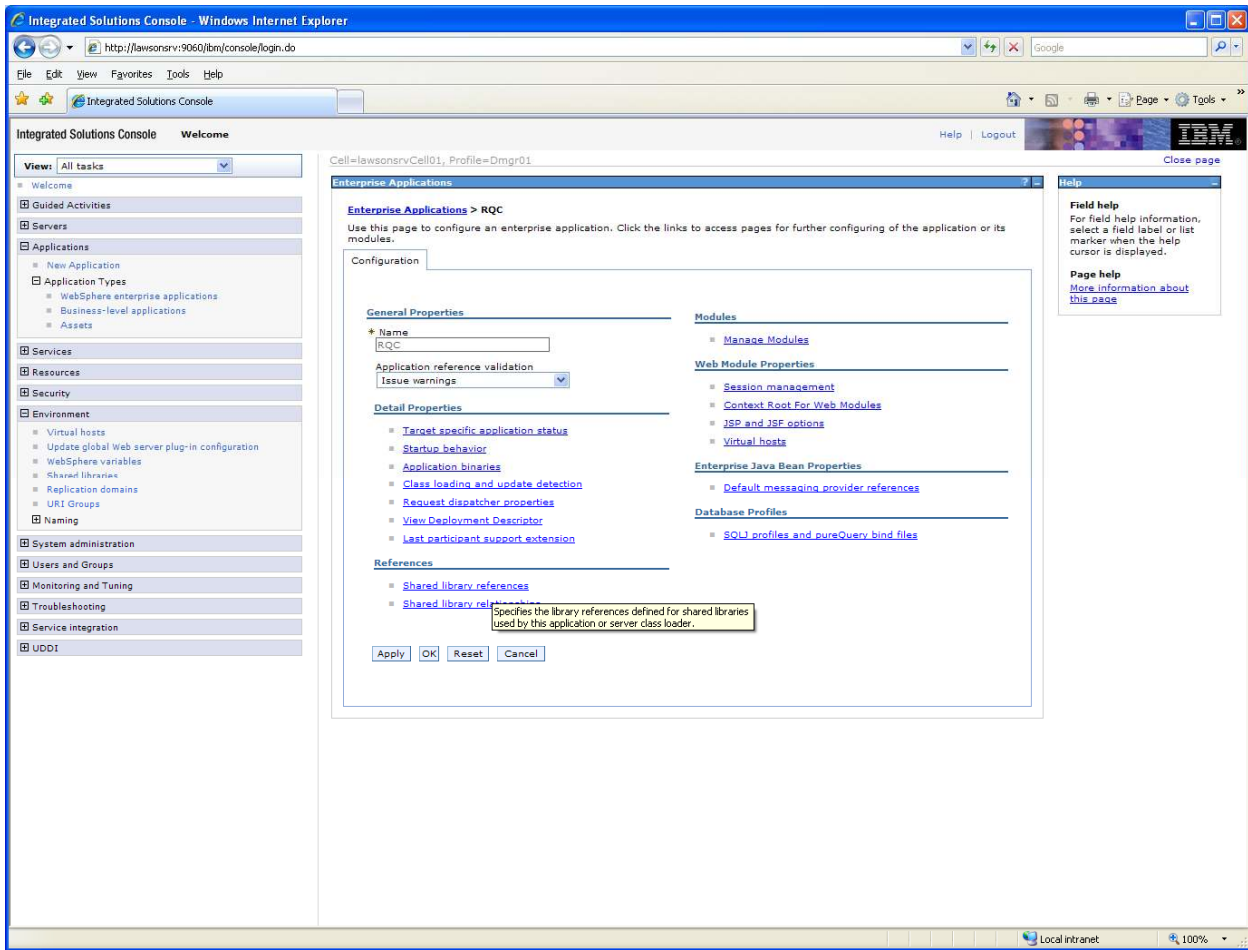
**Step 4 c:** Click “Save” to master configuration.



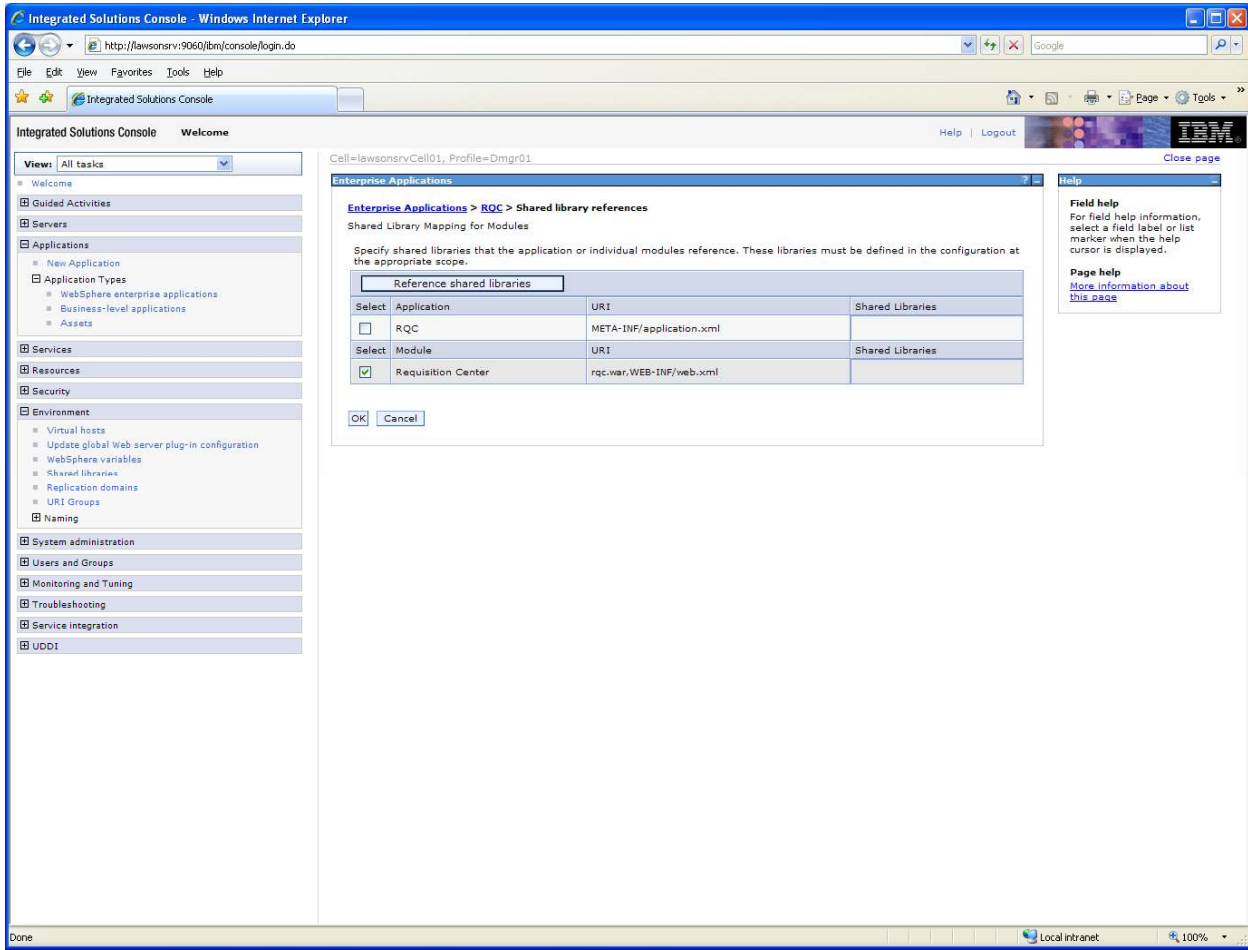
**Step 5:** Go to Applications, expand Application Types, click Websphere Enterprise Applications.

The above screen will appear (with applications appropriate to your installation).

**Step 6:** Click RQC.

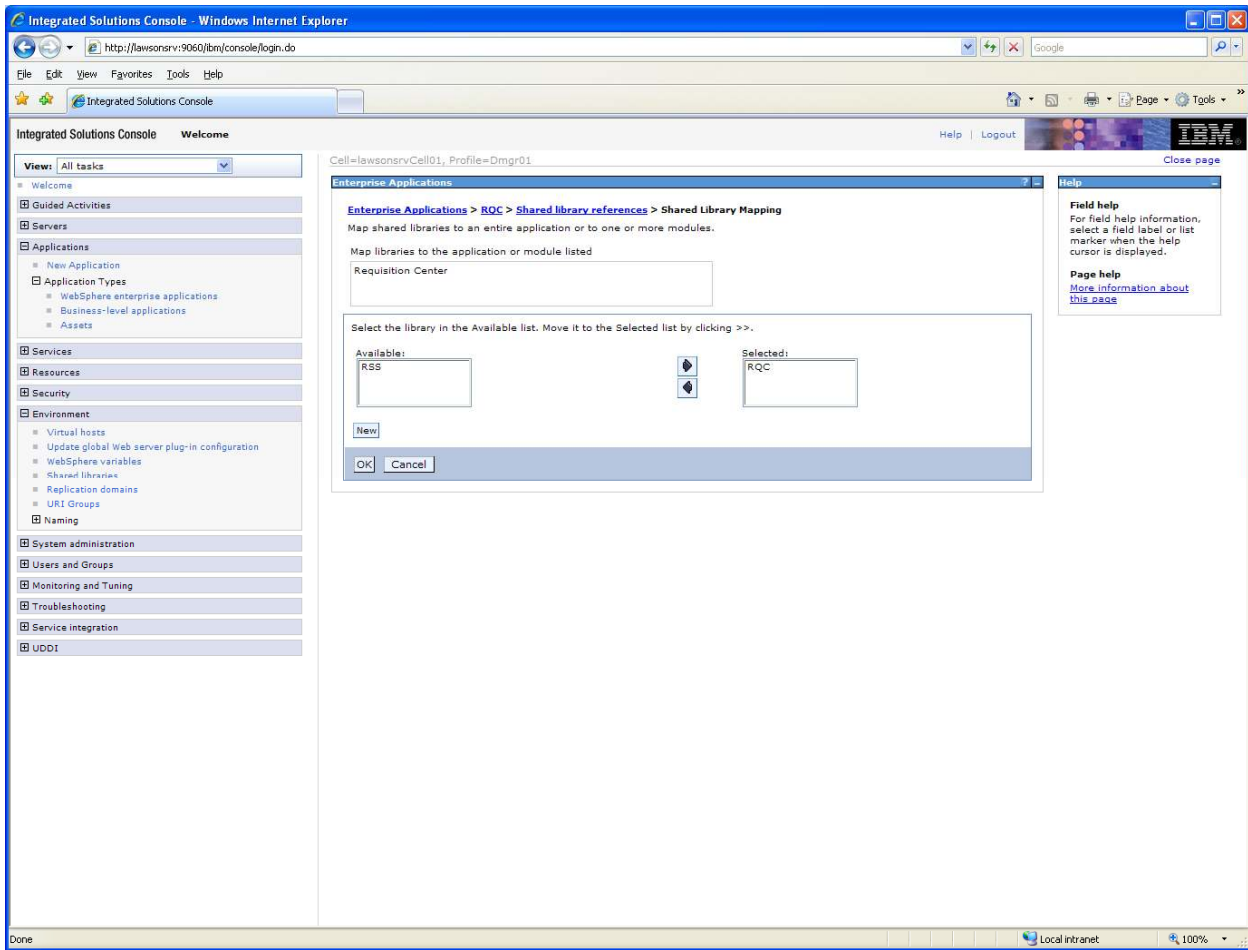


**Step 7 :** Click Shared Library References.



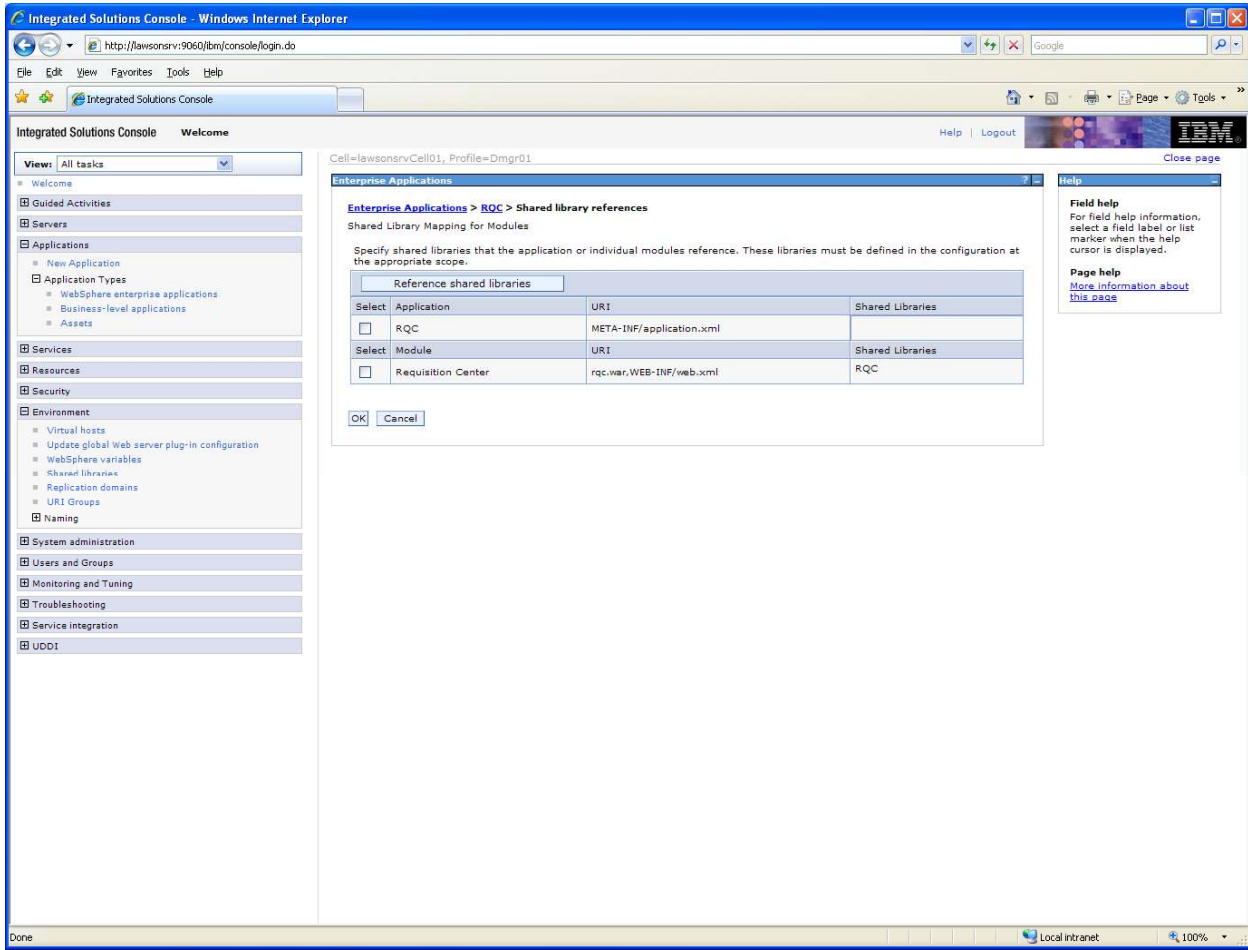
**Step 8:** Select the Requisition Center module and click Reference Shared Libraries.



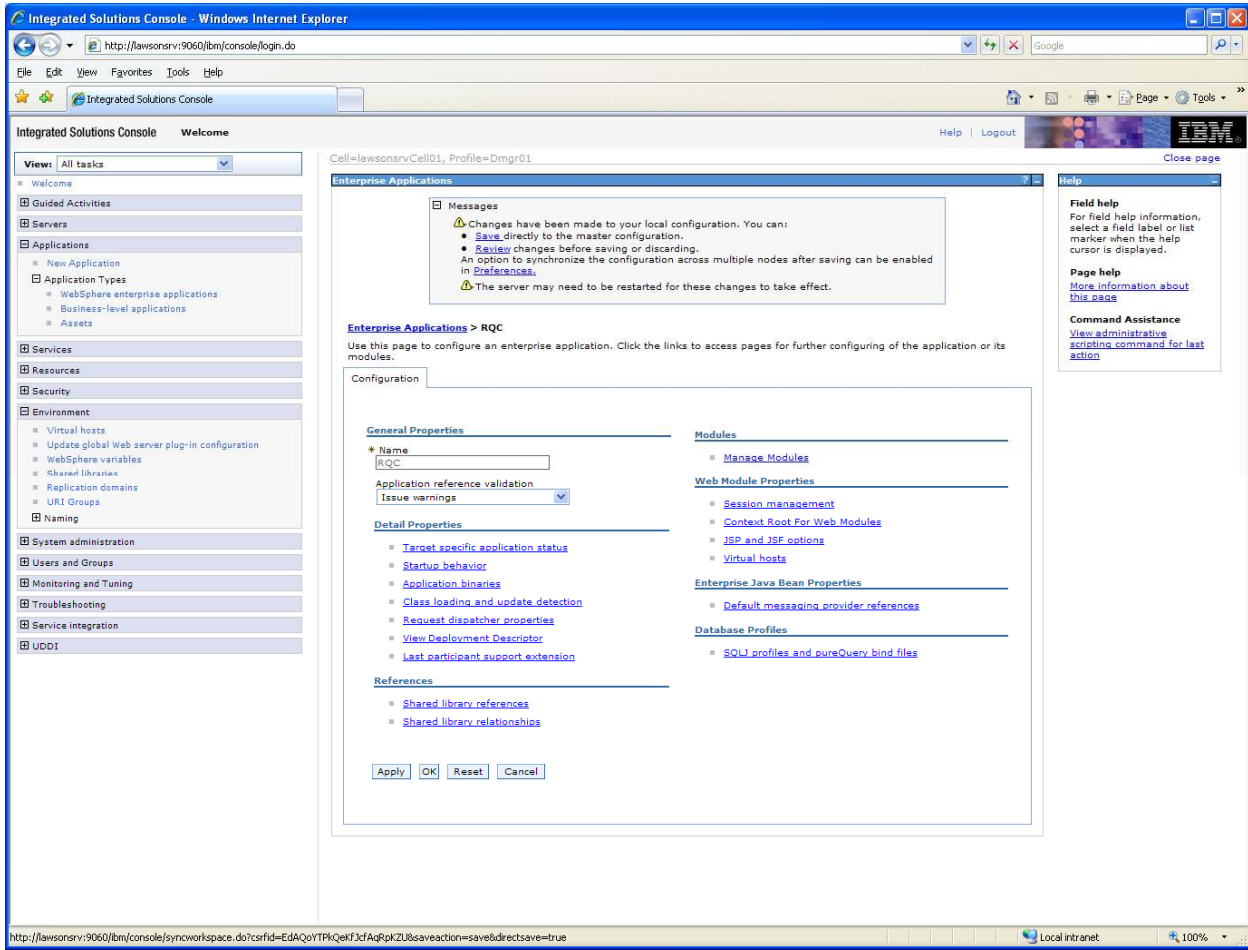


**Step 9:** After moving RQC from Available list to Selected list.

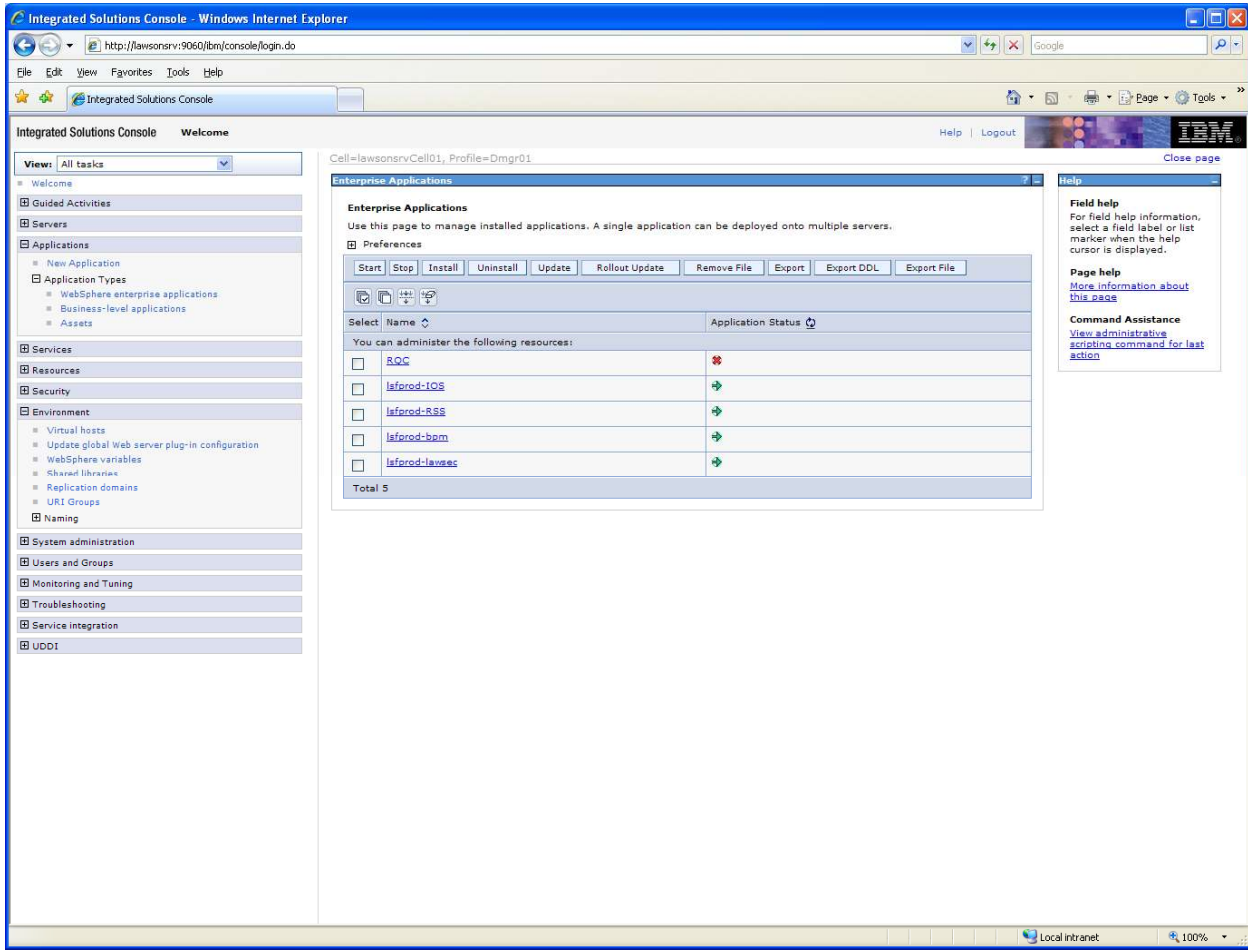
**Step 10:** Click OK



**Step 11:** Click OK again.



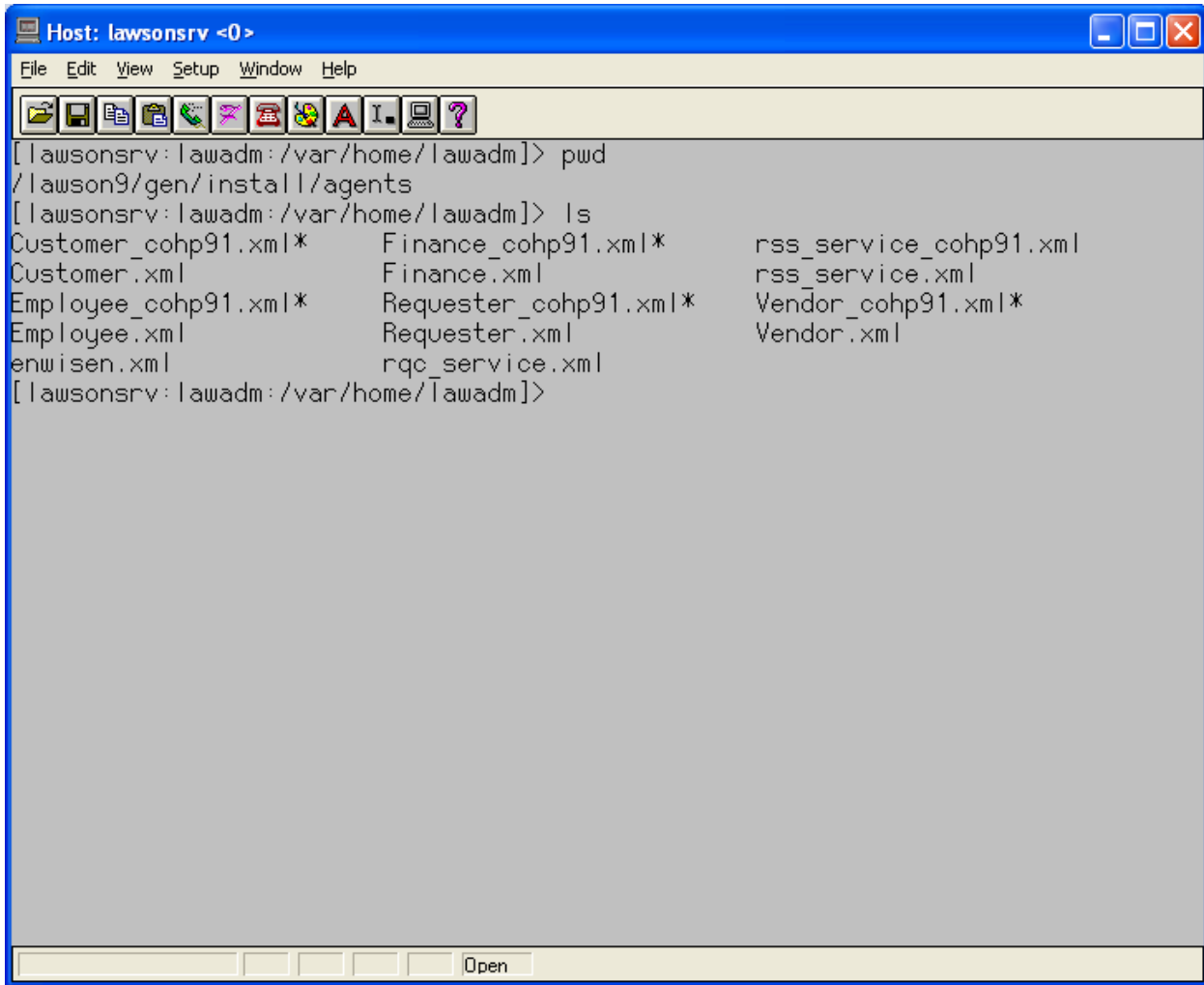
Prior to Save in step 12



**Step 12: Save:** Above screenshot is after Save in step 12.

**Note:** The RQC application is not running. I started the application after Creating Bookmarks as outlined on page 14 of the Installation Guide.

**Page 13: Deliver Template via SSOCONFIG**



cd \$GENDIR/install/agents (pwd command shows I am in that directory).

“ls” command to see contents of the directory.

Following step not shown:

**Step 1:**cp rqc\_service.xml rqc\_service\_cohp91.xml

```

<!--
Proprietary Program Material
This material is proprietary to Lawson Software, and is not to be
reproduced or disclosed except in accordance with software contract
provisions, or upon written authorization from Lawson Software.

Copyright (c) 2005 by Lawson Software. All Rights Reserved.
Saint Paul, Minnesota
-->

<BATCH_LOAD>
  <SERVICE>
    <ID>RQC</ID>
    <IdentityAttrList>user</IdentityAttrList>
    <CredentialAttrList>password</CredentialAttrList>
    <SvcEntryAttrList>user,password</SvcEntryAttrList>
    <HasCredential>TRUE</HasCredential>
    <LOGINScheme NAME="Form">
      <REF_Servicename>SSOP</REF_Servicename>
      <SERVICEURL>http://lawsonsrv.highpointnc.gov/rqc</SERVIC
EURL>
    </LOGINScheme>
    <LoginProcedure>Form based</LoginProcedure>
  </SERVICE>
</BATCH_LOAD>
[lawsonsrv:lawadm:/var/home/lawadm]>

```

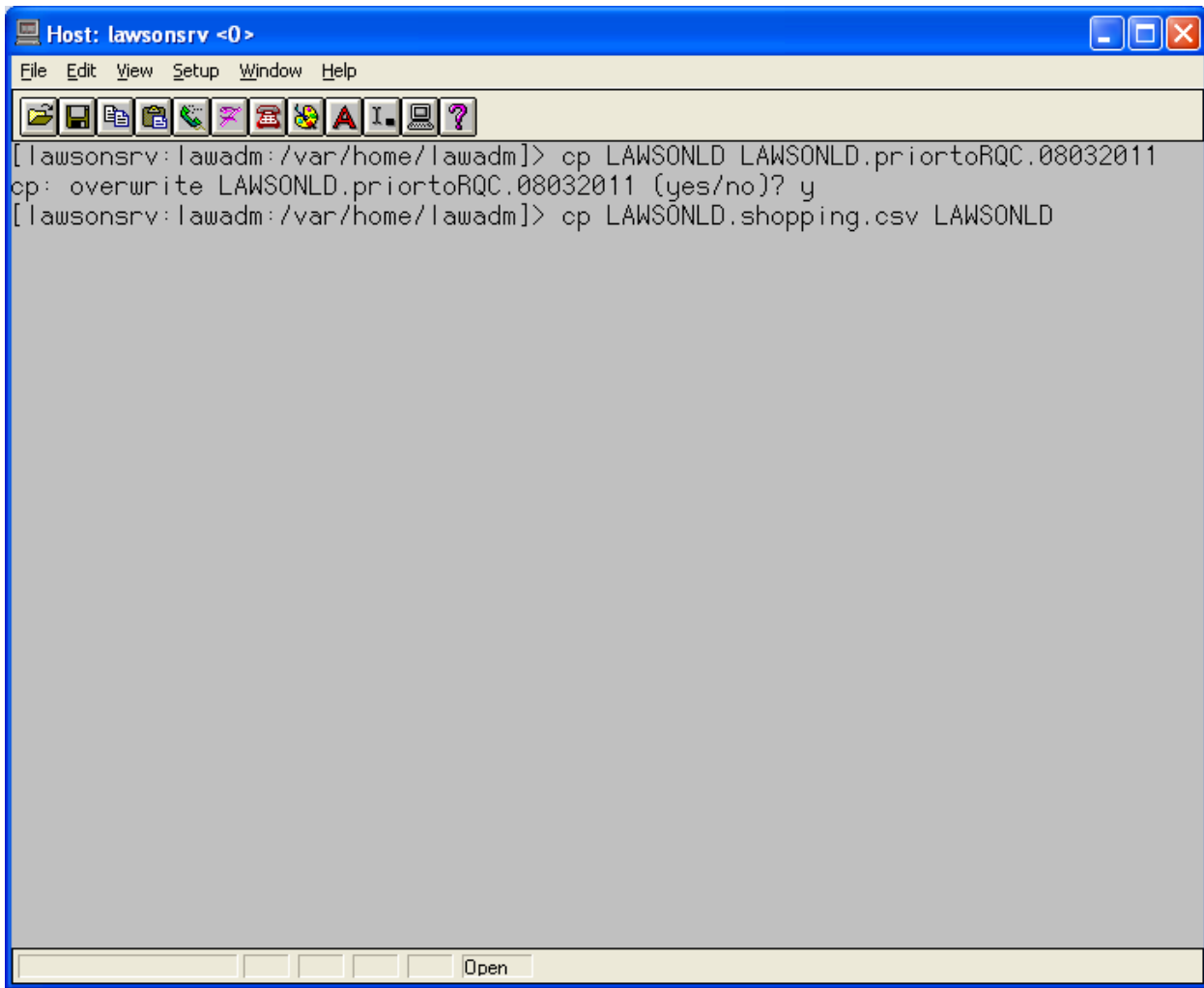
**Step 2:** vi “rqc\_service\_cohp91.xml” and modify <SERVICEURL>...</SERVICEURL> as appropriate.

**Step 3:** ssoconfig -l SSOCONGIGPASS rqc\_service\_cohp91.xml (screenshot not shown for security purposes, password must be entered in clear text).

**Step 4:** Repeat for Requester\_cohp91.xml. Did not have to modify the file since it had already been created for RSS.

**Step 6:** ssoconfig -l SSOCONGIGPASS Requester\_cohp91.xml NOTE: I omitted this step the first time and had to come back to execute it after running the LO920 job outlined on page 14 of the installation guide.

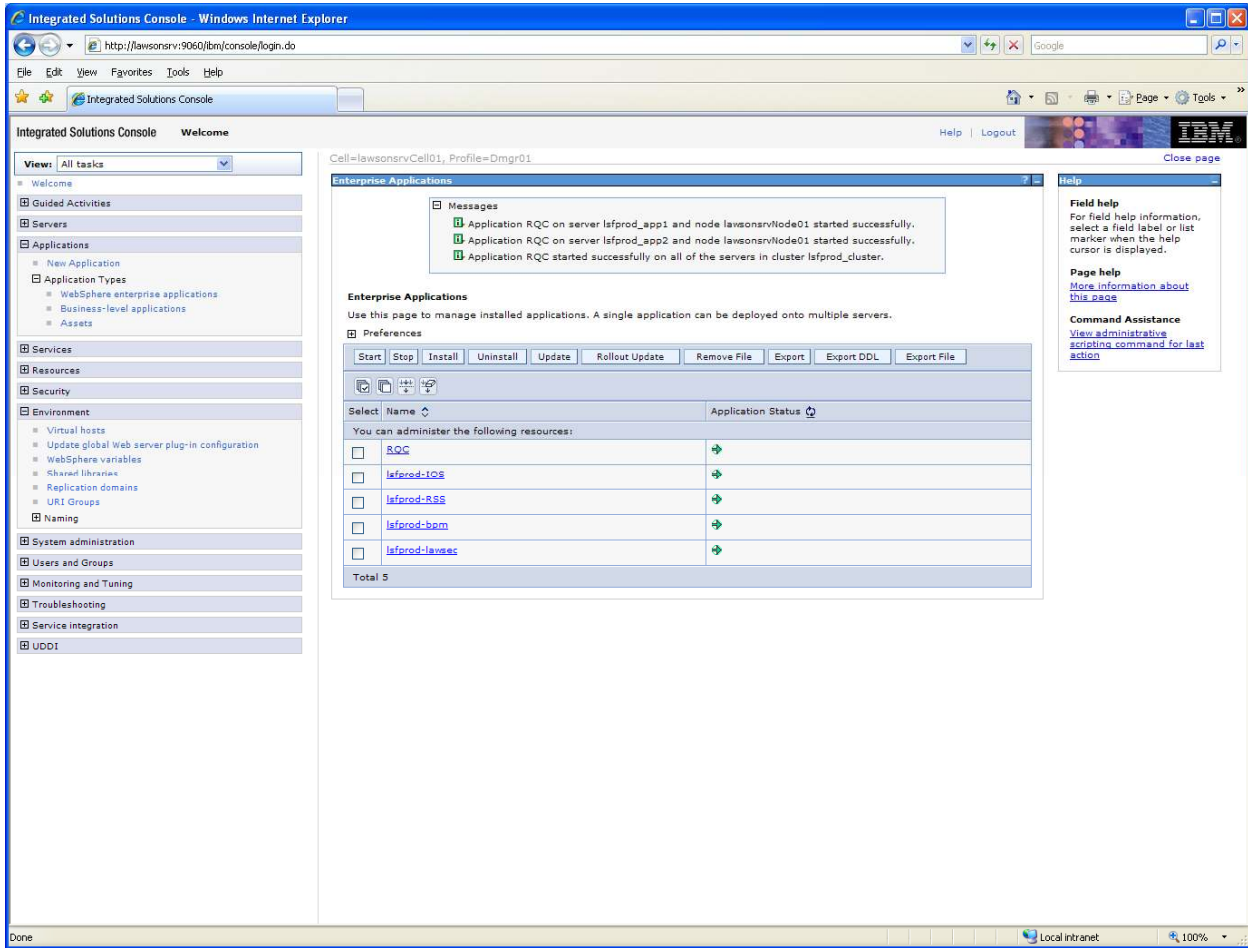
**Page 14: Create Bookmarks**



**Step 1:** cd \$LAWDIR/logan/work/LAWSONLD not shown.

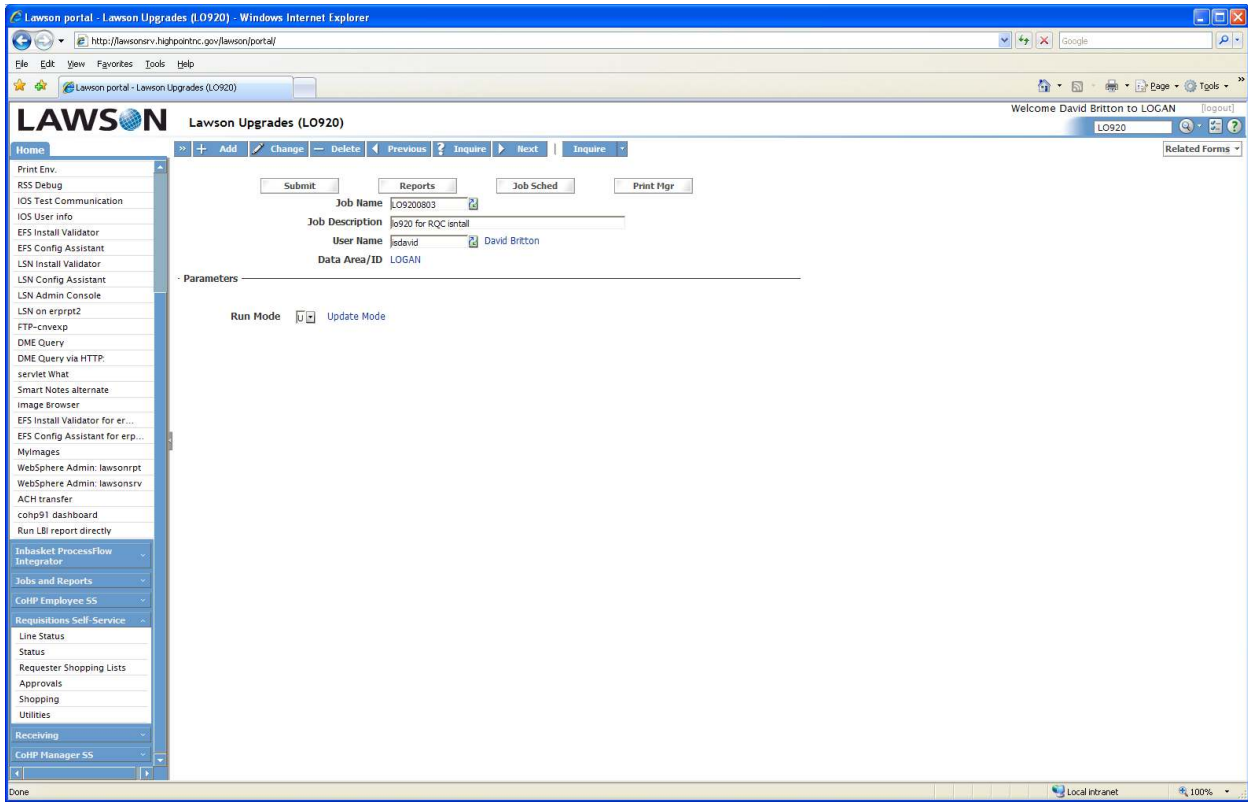
**Step 2:** make copy of original bookmark (note: I had already made a backup prior to these screenshots, hence the warning about overwriting LAWSONLD.prioritoRQC.08032011).

**Step 3:** cp LAWSONLD.shopping.csv LAWSONLD



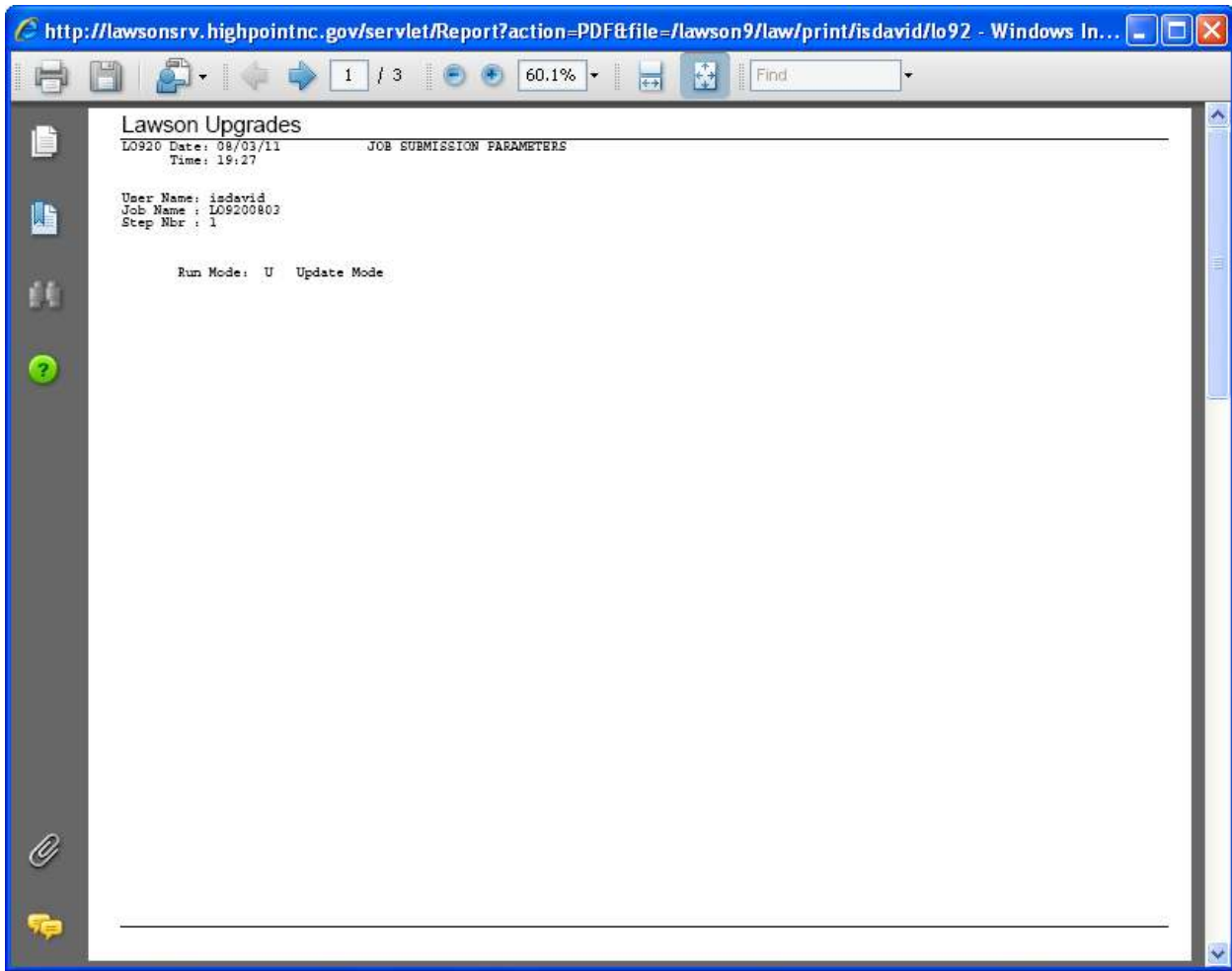
In the IBM console I selected RQC then pressed Start at this point.





**Step 4:** Add a LO920 job in LOGAN. Use the Update Mode option.

**Step 5:** Click Submit.



Output from LO920 job (first time I executed LO920. I had to run a second time after executing ssoconfig for Requester\_cohp91.xml).

http://lawsonsrv.highpointnc.gov/servlet/Report?action=PDF&file=/lawson9/law/print/isdavid/lo92 - Windows In...

2 / 3 60.1%

### Lawson Upgrades

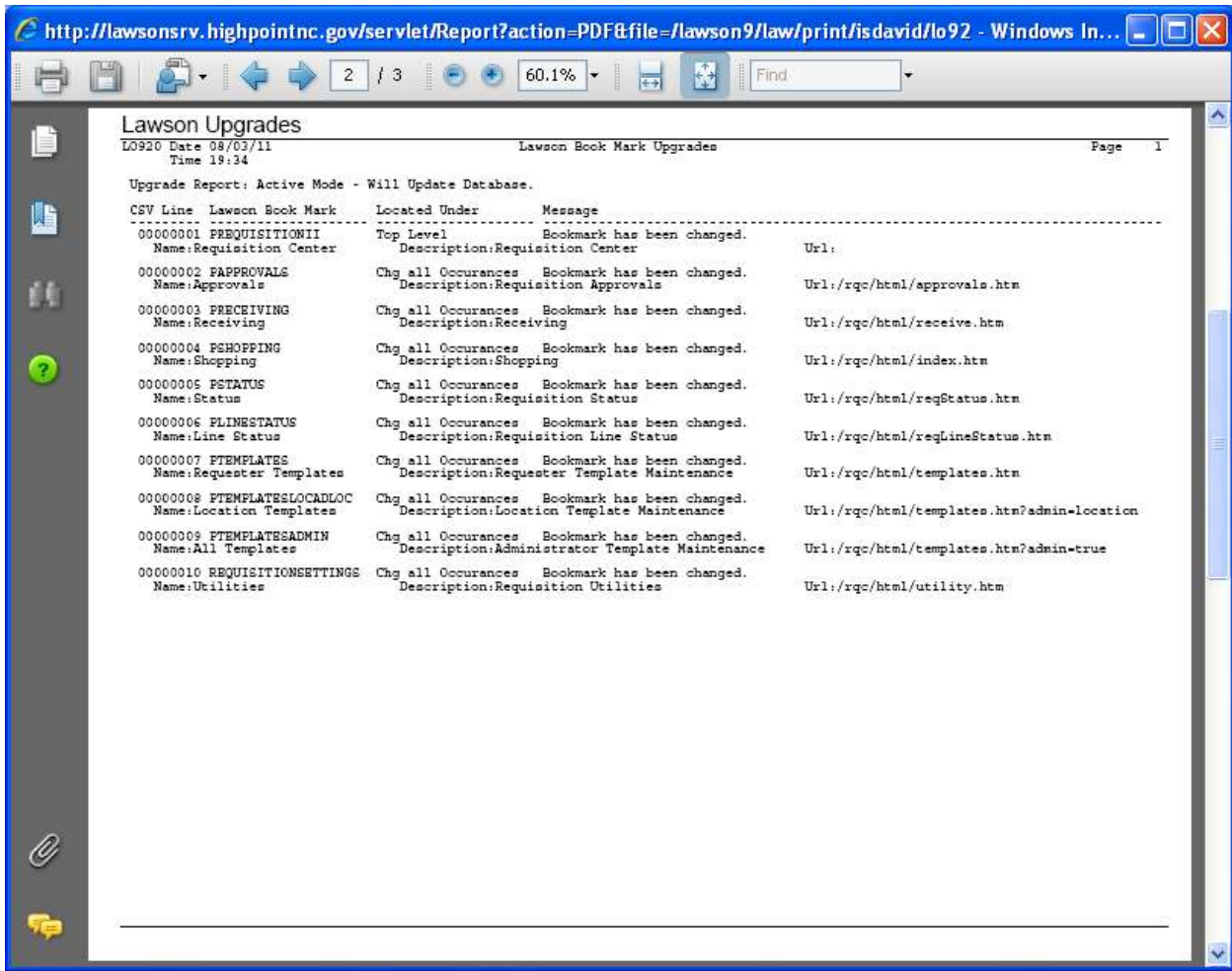
LO920 Date 09/03/11 Time 19:27 Lawson Book Mark Upgrades Page 1

Upgrade Report: Active Mode - Will Update Database.

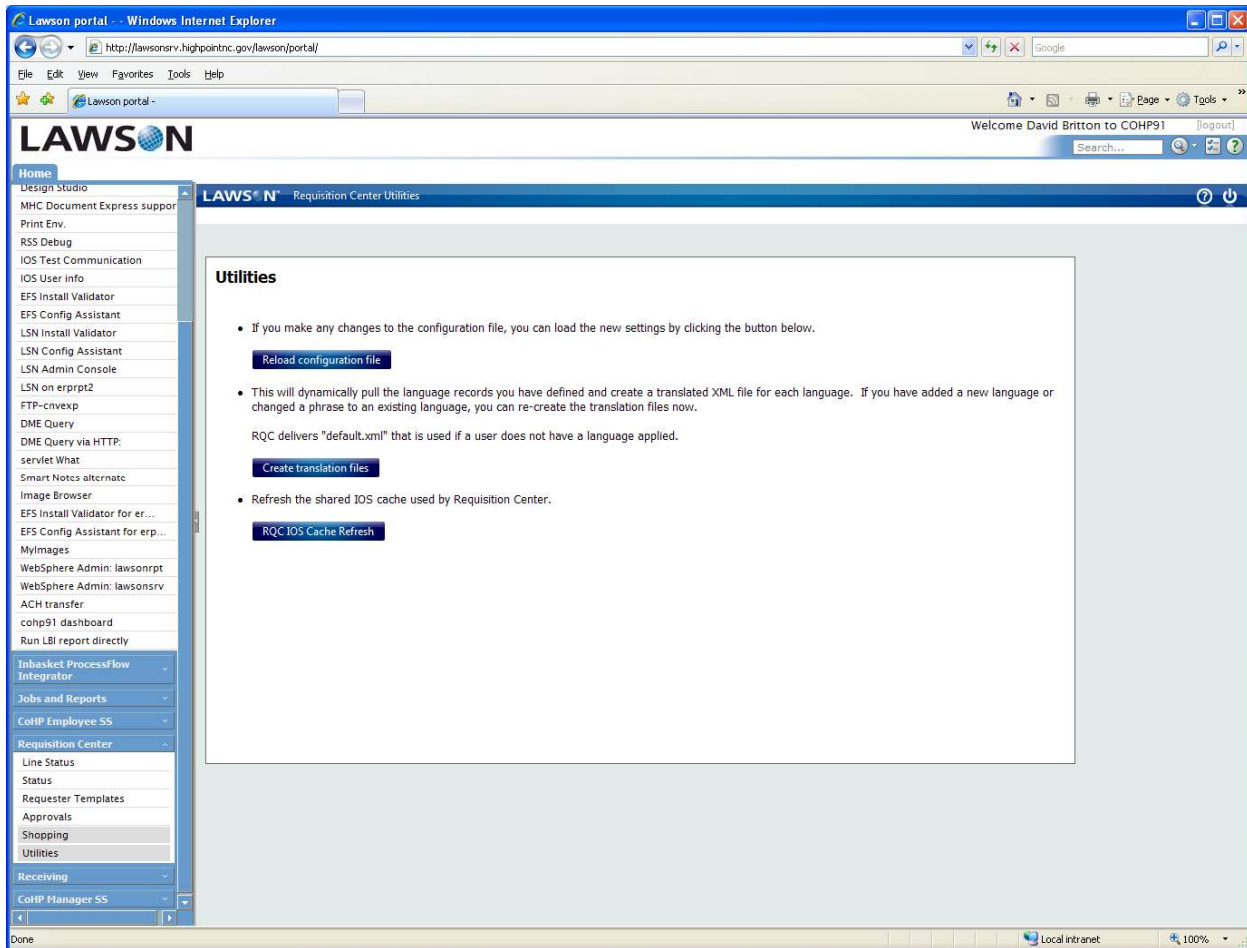
CSV Line	Lawson Book Mark	Located Under	Message	Url:
00000001	PORTALADMIN Name:Portal Administration	Top Level Description:Portal Administration	Bookmark has been changed.	
00000002	ADMINHOME Name:Administration Home Page	Chg all Occurances Description:Administration Home Page	Bookmark has been changed.	Url:admin/home.htm
00000003	ROLEMGR Name:Role Manager	Chg all Occurances Description:Role Manager	Bookmark has been changed.	Url:admin/rolemgr/
00000004	OFFICEMGR Name:Bookmark Manager	Chg all Occurances Description:Bookmark Manager	Bookmark has been changed.	Url:admin/officemanager/
00000005	LAWSONTERMINAL Name:Lawson Terminal	Chg all Occurances Description:Lawson Terminal	Bookmark has been changed.	Url:utility/lawterminal.htm
00000006	PORTALUTILCFDELETE Name>Delete Custom Form	Chg all Occurances Description>Delete Custom Form	Bookmark has been changed.	Url:utility/formdel.htm
00000007	PORTALUTILCFINDEX Name:Rebuild Custom Form Index	Chg all Occurances Description:Rebuild Index for Custom Forms	Bookmark has been changed.	Url:utility/bldindex.htm
00000008	PORTALUTILCFDDL Name:Set Custom Form Data Area	Chg all Occurances Description:Set Data Area For Custom Form	Bookmark has been changed.	Url:utility/formddl.htm
00000009	PORTALCFGPORTAL Name:Portal Configuration	Chg all Occurances Description:Show Portal Configuration	Bookmark has been changed.	Url:admin/confighost.htm?TYPE=PORTAL
00000010	PORTALCFGIOS Name:IOS Configuration	Chg all Occurances Description:Show IOS Configuration	Bookmark has been changed.	Url:admin/confighost.htm?TYPE=IOS
00000011	PORTALCFGSSO Name:SSO Configuration	Chg all Occurances Description:Show SSO Configuration	Bookmark has been changed.	Url:admin/confighost.htm?TYPE=SSO
00000012	IOSCACHEREFRRESH Name:IOS Cache Refresh	Chg all Occurances Description:IOS Cache Refresh	Bookmark has been changed.	Url:admin/cacherefresh.htm
00000013	PORTALRPTS Name:Jobs and Reports	Top Level Description:Jobs and Reports	Bookmark has been changed.	Url:
00000014	JOBLIST Name:Job List	Chg all Occurances Description:List all jobs	Bookmark has been changed.	Url:reports/joblist.htm
00000015	PRINTFILES Name:Print Manager	Chg all Occurances Description:List all print files	Bookmark has been changed.	Url:reports/printfiles.htm
00000016	JOBSCHED Name:Job Schedule	Chg all Occurances Description:Show Job Schedule	Bookmark has been changed.	Url:reports/jobschedule.htm
00000017	JOBDEF Name:Multi-Step Job Definition	Chg all Occurances Description:Show Multi-Step Job Definition	Bookmark has been changed.	Url:reports/jobdef.htm

The screenshot shows a web browser window with the address bar containing the URL: <http://lawsonsrv.highpointnc.gov/servlet/Report?action=PDF&file=/lawson9/law/print/isdavid/lo92>. The browser interface includes a toolbar with navigation and search icons, and a search box with the text 'Find'. The main content area displays a PDF report titled 'Lawson Upgrades'. The report header includes the text 'LO920 Date 08/03/11 Time 19:27' and 'Lawson Upgrade Totals' on the right side, with 'Page 2' in the top right corner. The report body contains a table of 'Book Mark Totals' with the following data:

Book Mark Totals:	
Added	0
Updated	17
In Error	0



Output from second run after executing ssoconfig for Requester\_cohp91.xml.



**Step 6:** Verify the bookmarks for RQC appear.

We have had problems with IE updating correctly after modifying the Portal so I performed the following steps (we had all of our users perform the same steps).

- Log out of lawson
- Close all open IE windows
- Open IE – goes to my home page
- Delete temporary files, history, form data (IE 7).
- Close IE
- Open IE, go to Lawson

I then saw the Requisition Center in my Navigation Bar.

## Page 15: Testing the Installation

### Set Up User ID

Steps 1 and 2 not shown.

Step3: Click Requisition Center then the Utilities link.

Step 4: Click the Reload Configuration File button  
Click the RQC IOS Cache refresh button

## Run the Requisition Center

Requisition Center - Windows Internet Explorer

LAWS<sup>®</sup> N<sup>™</sup> RQC Find / Shop Inquire Profile Welcome, PATTY SYKES

Basic Detail Profile Accounting User Fields Comments

Requester: FIPATTY  
PATTY SYKES

Requisition

Creation Date

Requisition Status

Reference Number:

Requisition Description:

Company: 1000 City of High Point

Requesting Location: 22400 Purchasing Division

Requested Delivery Date:  mm/dd/yyyy

Priority:

Deliver To:

Commodity Code:

Item	Quantity	Cost
--- No Items ---		

Total Quantity: 0  
Total Cost: 0  
Number of Lines: 0

New Clear Print Release

Click on the Shopping Bookmark.

And life is good☺